

2018 - 2019

UPLIFTING COMPANY

AUTOP **STENHOJ**



TESTNA OPREMA ZA TESTIRANJE PODVOZJA

- Testerji zračnosti v podvozju

KOCH

PRODAJA IN SERVIS OPREME

KOCH, SERVISNA OPREMA, d.o.o.
Špruha 42, SI-1236 Trzin

prodaja@koch.si

Tel.: +386 1 56 44 770
Fax: +386 1 56 44 772

aleksander.presekar@koch.si

Play detectors



Application

- Repair and maintenance
- Test
- General inspection

Testmaster APT4-1 und 20-1

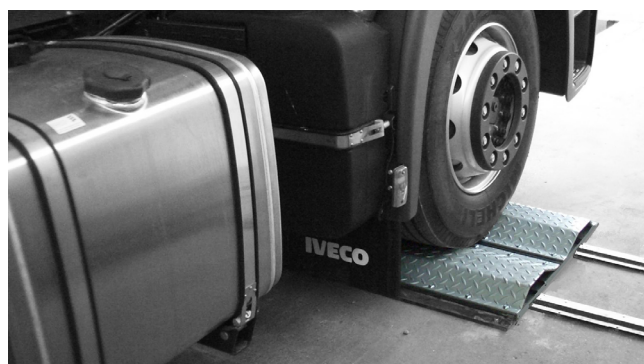
Our Testmaster APT4-1 play detector require only one test plate to check steering components and wheel bearing. This is unique in the market and accordingly patented (Patent application DE 102005056655.3, PCT/EP2006/011249). The play detector has only one test plate for checking steering components and wheel bearings on both sides, because of the unique construction. The play detector is especially suited for surface-mounting because of the low height. The test plate is divided in two halves, each equipped with a double operating hydraulic cylinder. The test plate is galvanized. Powerful hydraulic unit with valve control, electrical switch box and 12 m cable remote control. We furthermore offer a wide range of accessories.

Versions:

- Galvanized test plate in 2 halves
- Construction height of 60 mm
- Powerful hydraulic unit, electric switch box, control unit with toggle switch and 12 m cable

Optional extras:

- Cable hand lamp with toggle switches
- Radio remote control with hand lamp
- Automatic plate movement
- Hydraulic hoses
- Cover for hydraulic unit
- Metal hose cover



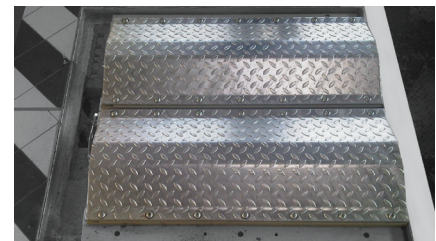


Scan the QR-Code
for detailed product information.

Further Information on
www.autopstenhoj.com

Technical data	APT4-1	APT20-1
Axle load	4,000 kg	20,000 kg
Plate movement	80 mm	100 mm
Motor	2.2 kW	2.2 kW
Compression strength per plate	11 kN	18 kN
Hydraulic pressure	145 bar	145 bar
Hydraulic oil	HLP 46 / 15 l	HLP 46 / 15 l
Fuse	16 A inert	16 A inert
Power supply	3 x 400 V, N, PE 50 Hz	3 x 400 V, N, PE 50 Hz
Dimensions, test plate	500 x 605 x 60 mm	900 x 900 x 90 mm

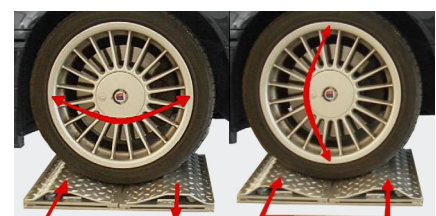
Additional accessories at www.autopstenhoj.com



Testmaster APT20-1



Testmaster APT20-1



Functionality of plates

Play detectors



Application

- Repair and maintenance
- Test
- General inspection

Testmaster APT4F

Our Testmaster APT4F is a very flat axle play tester for cars up to 4 tons axle load. The axle play tester is used to detect loose or knocked out axle and steering parts. With the low overall height of only 55 mm, this axle play tester is suitable for above ground mounting as well as for floor level mounting. This is unique in the market and accordingly patented. The two floor groups with hot-dip galvanized test plates, which float transversely and longitudinally, are equipped with low-maintenance and wear-resistant Teflon plain bearings. Our powerful hydraulic unit with electrical / switch box, main switch, switching and control elements forms a compact unit. The axle play tester is controlled by means of a control unit, with rocker switch and 12 m cable.

Testmaster APT4Pit, APT8Pit, APT20 und APT20Pit SW

Our axle play testers Testmaster APT4Pit, APT8Pit, APT20Pit and APT20Pit SW are specially designed for mounting next to a working pit. The powerful hydraulic cylinders allow axle loads from 4 t and 8 t until 20 t. The hot-dip galvanized test plates are equipped with teflon plain bearings. The APT20Pit-SW is reinforced and equipped with steel shafts. All APT Pit testers are supplied with cable remote control, as well as a compact hydraulic unit with electrical / switch box, valve control and main switch. The powerful, hydraulically actuated test plates move transversely and longitudinally against each other. Through the targeted movement sequences of the test plates, knocked out or loose axle and steering parts are immediately visible. Depending on the design, the hot-dip galvanized test plates offer contact surfaces of 750 mm x 750 mm (W x L) to 750 mm x 900 mm (W x L), so vehicles with twin tires can also be tested. The compact electrical switchbox, with main switch, is mounted directly to the hydraulic unit to save space.



Scan the QR-Code for detailed product information.

Further Information on www.autopstenhoj.com

Technical data	Testmaster APT4F	Testmaster APT4Pit	Testmaster APT8Pit	Testmaster APT20 Pit und APT20-SW Pit
Axle load	4,000 kg	4,000 kg	8,000 kg	20,000 kg
Plate movement	50 mm cross and lengthwise	100 mm (+-50 mm) cross and lengthwise	100 mm (+-50 mm) cross and lengthwise	100 mm (+-50 mm) cross and lengthwise
Motor	2.2 kW	2.2 kW	2.2 kW	2.2 kW
Compression strength per plate	7 kN	23 kN	23 kN	24 kN
Compression speed	6 cm / sec.	approx. 5 cm / sec.	approx. 5 cm / sec.	approx. 5 cm / sec.
Hydraulic pressure	145 bar	145 bar	145 bar	145 bar
Hydraulic oil	HLP 46 / 15 l	HLP 46 / 15 l	HLP 46 / 15 l	HLP 46 / 15 l
Fuse	16 A inert	16 A inert	16 A inert	16 A inert
Power supply	3 x 400 V, N, PE 50 Hz	3 x 400 V, N, PE 50 Hz	3 x 400 V, N, PE 50 Hz	3 x 400 V, N, PE 50 Hz
Dimensions, test plate	550 x 550 x 8 mm	750 x 750 x 8 mm	750 x 750 x 8 mm	790 x 900 x 12 mm
Dimensions, frame (L x W x H)	600 x 600 x 47 mm	600 x 600 x 160 mm	600 x 600 x 160 mm	600 x 600 x 160 mm

Versions:

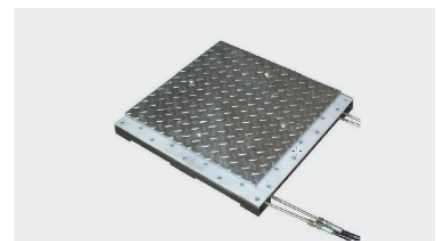
- Two units with hydraulic cylinders for cross and lengthwise movement
- Galvanized test plates on maintenance-free teflon bearings
- Powerful hydraulic unit with control box, main switch and control elements
- Remote control with 12 m cable and toggle switches



Remote control with cable

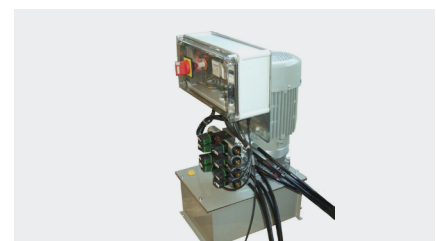
Optional extras:

- Cable hand lamp with toggle switches
- Radio remote control with hand lamp
- Automatic plate movement
- Hydraulic hoses
- Cover for hydraulic unit
- Metal hose cover
- Drive-on and -off ramps for surface-mounted installation
- Foundation frame
- Hose covers



Test plate

Additional accessories at www.autopstenhoj.com



Hydraulic unit