

2018 - 2019

UPLIFTING COMPANY

AUTOP **STENHOJ**



TESTNA OPREMA ZA TESTIRANJE PODVOZJA

- Testne steze

KOCH

PRODAJA IN SERVIS OPREME

KOCH, SERVISNA OPREMA, d.o.o.
Špruha 42, SI-1236 Trzin

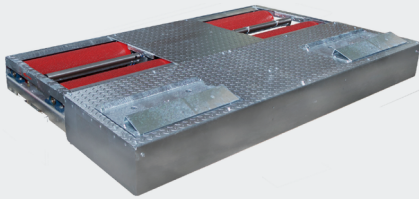
prodaja@koch.si

Tel.: +386 1 56 44 770
Fax: +386 1 56 44 772

aleksander.presekar@koch.si

Testmaster TL40

Testlane



Application

- Check-in
- Repair and maintenance
- Test
- General inspection



Description:

- Galvanized, enclosed roller set
- Wear resistant 205 mm rollers with welded profile surface
- Test width: 800 mm to 2,200 mm (optional 800 - 2,800 mm)
- Height adjustment screws
- Wear resistant and modern electronic strain gauge measuring system
- 50 mm sensor rollers in stainless steel
- Prepared for retrofitting of weighing device
- Modular system, all roller sets can be extended to test lanes
- Compact electric / switchbox, prepared for upgrade
- Drive-over axle load 4 t (optional 5 t)
- Brake force 4,5 kN (optional 6 kN)
- Equipped as standard with drive-off system
- Manual / Automatic mode
- Delayed switch-on, start-up monitoring
- Testing program for electronic parking brakes
- Lockable main switch
- Suspension tester Boge system, galvanized bottom group
- Galvanized test plates
- Large easily read analog display
- Optionally with large easily read analogue display or with PC-connection kit and PC software

Optional extras:

- Test width 800 - 2,800 mm
- Foundation frame
- Permanent formwork
- Plastic-coated rollers
- Pneumatic lowering/ lifting device
- Raising kit
- Suspension tester
- Tramming plate
- Manually reversible rotation and measuring device
- Automatic four wheel recognition (patented)
- EDOS (Easy drive-out system - patented)
- Roller cover plate
- Remote control
- LED digital display
- Pedal force meter
- Weighing device
- PC connection & ASA live stream
- Minicomputer ASA live stream
- PC software display, basic, test lane and office

Special equipment on request!

Versions:

- Galvanized roller set and suspension tester
- Wear resistant 205 mm rollers with welded profile surface
- Electrical / switch box with motor protection, control electronics, lockable main switch, 12 m pre-cabled



Scan the QR-Code for detailed product information.

Further Information on www.autopstenhoj.com

Technical data - roller set	
Drive-over load	4,000 kg
Test speed	5 km/h
Motors	2 x 3 kW (option 2 x 4 kW)
Roller diameter	205 mm
Test width	800 - 2,200 mm (option 800 - 2,800 mm)
Brake force	4.5 kN (option 6 kN)
Test load	at 50% braking 2 t (option 2,6 t)

Suspension tester	
Drive-over load	4,000 kg
Test load	2.6 t
Motors	2 x 1.2 kW
Fuse	3 x 20 A inert
Power supply	3 x 400 V, N, PE 50 Hz
Dimensions, analogue display (W x H x D)	810 x 670 x 70 mm
Dimensions, roller set (L x W x H)	2,320 x 680 x 240 mm (800 – 2,200 mm) Option 2,925 x 680 x 240 mm (800 – 2,800 mm)
Dimensions, suspension tester (W x L x H)	2,320 x 800 x 280 mm

Additional accessories at www.autopstenhoj.com

