

Truck / CV Special 2023



Das Werkzeug

Our superheroes ...

PRESEKAR

PRODAJA IN SERVIS OPREME

Špruha 42, 1236 Trzin, Slovenia

Tel.: +386 1 56 44 770

Mob.: +386 41 638 609

Fax: +386 1 56 44 772

prodaja@presekar.com

aleksander.presekar@presekar.com

www.presekar.eu



... whether truck, trailer, bus, construction machine or agricultural!

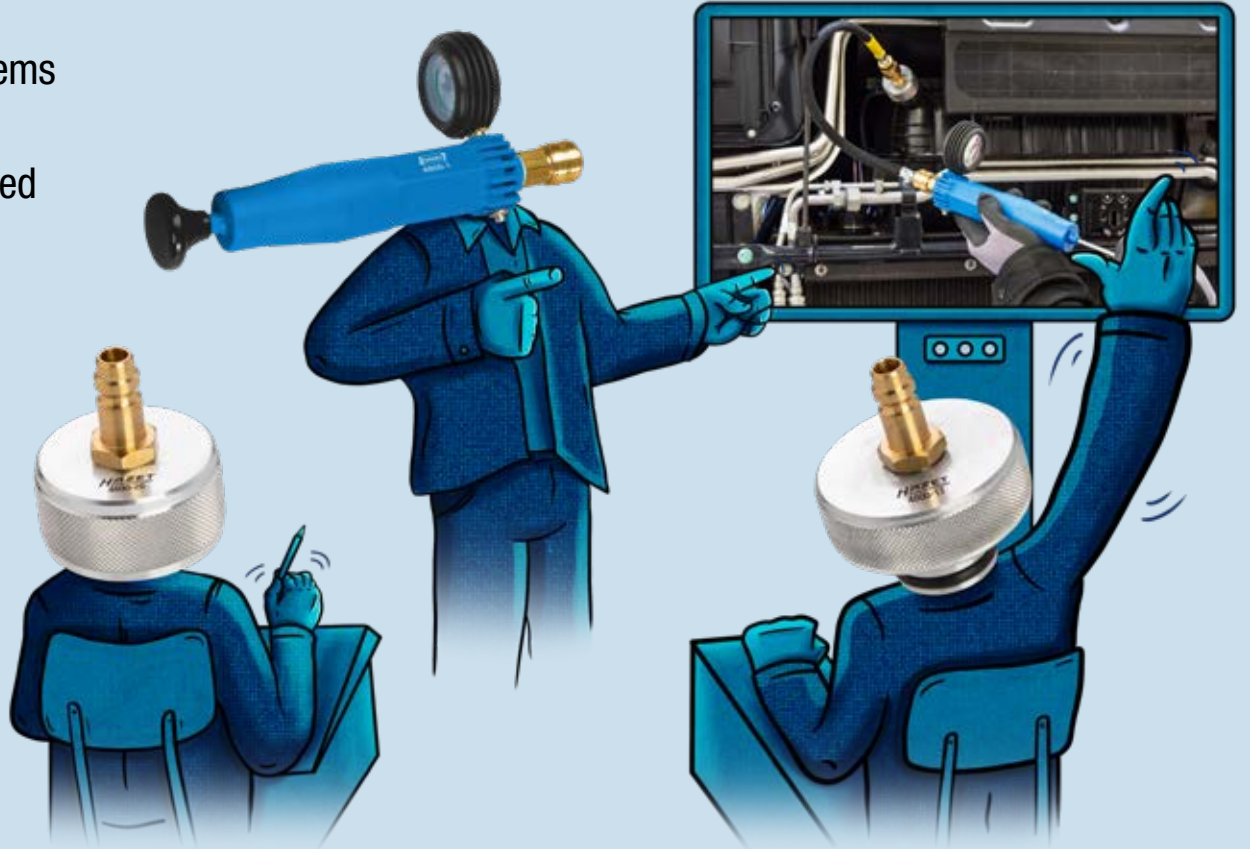
We are commercial vehicles!

NKW23/EN/XX/0

Valid from 1 March 2023 until 29 February 2024.
Errors excepted.

Cooling system diagnostics

- » Precise checking for leakage in cooling systems and heating circuits
- » Reliable diagnosis thanks to precisely matched threads on the expansion tank opening
- » Extensive adapter family "Made in Germany"
- » Bubble-free filling of the cooling and heating circuit with 4802-1 in trucks, buses, agricultural machinery and construction vehicles



4802-1, EAN-No. 4000896200030

Commercial vehicle vacuum radiator filler

- **Fast cooling fluid flow rate: approx. 80 l in approx. 20 minutes**
- No cooling fluid is lost through the cooling system overflowing
- Separate control through the diagnostic testing device is no longer necessary
- Vacuum leakage test before filling the cooling system
- **Bubble-free filling of the cooling and heating circuit in trucks, buses, agricultural machinery and construction vehicles**
- Can be used together with single or universal adapters (see table on page 3)



**80 litres in
20 minutes!**

Made in Germany



4800/8, EAN-No. 4000896216499

Radiator adapter case for commercial vehicles

- Checking for leakage in cooling systems and heating circuits
- 4800-1 Cooling pump to 2.5 bar
- 4800-2 Intermediary piece, flexible hose
- 4800-3 Radiator adapter for **DAF** 45 model year 05/1991 → 12/2000, **DOOSAN** Wheel excavator S, Caterpillar excavator DX, **KAESER** Mobilair, **LIEBHERR** A308-316, **MERCEDES-BENZ** Vito, Viano, Solaris, **NISSAN** forklifts, **PUTZMEISTER** BSA 1409, **SCANIA** Vabis
- 4800-5 A Radiator adapter for **COMPAIR** mobile compressor with VW expansion tank, **LINDE** forklifts, **PUTZMEISTER** BSA 1407D · BSA 2110 HP-D, **RENAULT** Midium model year 01/2000 → 12/2013, **Volvo** FE model year 05/2006 → · FL model year 03/2000 →
- 4800-25 radiator adapter for **MAN** buses such as Lions Coach, Lions Star, Lions Comfort, Lions City, **MERCEDES-BENZ** Citaro model year 01/1998, **IVECO** Euro-Star, Euro-Tech, Euro-Truck, Stralis, Daily, with black lock, **MAN** F90, F2000, TGA model year 03/2000 →, TGL model year 04/2005 →, TGM model year 10/2005 →, TGS model year 10/2007 → 01/2012, TGX model year 10/2007 → 01/2012, **MERCEDES-BENZ** commercial vehicles Actros, Atego 1217 model year → 1999, Eco 8401, SK1728 Antos, Arocs, Atego model year 1998 → 2013, Axor model year 09/2001 → 10/2004, Econic, Zetros
- 4800-26 Radiator adapter for **DAF** CF, XF Euro 6 model year 2013 →
- 4800-27 Radiator adapter for **MERCEDES-BENZ** Atego model year 2014 →
- 4800-28 Radiator adapter for **MERCEDES-BENZ** Actros EURO 6 with HEYCO expansion tank model year 2014 → **MAN** TGX, TGS EURO 6 with HEYCO expansion tank model year 2012 →
- Classification to vehicle types: www.hazet.de → Service → The Tool Finder → Radiator adapters 4800



Made in Germany



4800
Cooling pump and adapter

Made in Germany

HAZET No.		Components	EAN-No. 4000896 +	
4800-1		<ul style="list-style-type: none">Cooling pumpUp to 2.5 bar	022243	
4800-2		<ul style="list-style-type: none">Intermediary piece, flexible hose	022274	
4800-3		<ul style="list-style-type: none">AMAZONE PanteraCLAAS Jaguar, Lexion, Scorpion, Ares, Atlas, CeresDAF 45 model year 05/1991 → 12/2000DOOSAN Wheel excavator S · Caterpillar excavator DXFENDTKAESER MobilairLIEBHERR A308-316MASSEY FERGUSON with tank no. 180224M92 and 4296015M1MERCEDES-BENZ Vito · Viano · SolarisNISSAN forkliftsPUTZMEISTER BSA 1409SCANIA VabisCASE Quadtrac, Magnum	022281	
4800-4A		<ul style="list-style-type: none">DEUTZ Engines 3.6 PowerPack · BF6M1013FC · TCD2013L6 2V and 4V Genset 250kVHATZ 4H50ticIVECO Eco Daily with blue lockCASE Puma, SBS, LBS, Optum, Maxxum, CVXNEW HOLLAND TVT, T7, T7 Elite Pack, T6FENDT Vario model year 2000 → Combine harvesters L seriesCLAAS Arion, Axion	156504	
4800-5A		<ul style="list-style-type: none">COMPAIR Mobile compressor with VW expansion tankFENDT Farmer 300 model year 1988 → Type 500 · Type 700 · Vario model year 1988 → 2000LINDE forkliftsPUTZMEISTER BSA 1407D · BSA 2110 HP-DRENAULT Midium model year 01/2000 → 12/2013Volvo FE model year 05/2006 → FL model year 03/2000 →	161843	
4800-16		<ul style="list-style-type: none">DEUTZ Engines KHD1015 · D2008 · D2009 · TD2.9 L4 · TCD3.6 · BFM1013 · BFM2012 · TCD2013 2V · BFM1015 · TCD2015 V8 · V6 · M · TCD 12.0 and 16.0MERCEDES-BENZ Sprinter model year 1999 → Type 170 · 208 · 611	098507	

HAZET No.		Components	EAN-No. 4000896 +	
4800-17		<ul style="list-style-type: none">JOHN DEERE Tractors series 5, 6, 7, 8 and 9 · Forage harvesters series 8000 and 9000 · Self-propelled sprayer R4040, R4050, R4140 and 4150 · Windrower W170 · Cotton picker CP690 · Excavator 160DLC · Crawler dozer 700J · WHEEL LOADERS WL53, WL56HITACHI excavator ZAXIS 6HAGIE STS 10, 12, 14 and 16	109661	
4800-18		<ul style="list-style-type: none">MERCEDES-BENZ Sprinter since 2006, Viano since 2003	128815	
4800-20		<ul style="list-style-type: none">IVECO Euro-Star · Euro-Tech · Euro-Truck · Daily with black lockMAN F90 · F2000 · TGA model year 03/2000 → TGL model year 04/2005 → TGM model year 10/2005 → TGS model year 10/2007 → 01/2012 · TGX model year 10/2007 → 01/2012MERCEDES BENZ commercial vehicles Actros · Atego 1217 model year → 1999 · Eco 8401 · SK1728 · Antos · Arocs · Atego model year 1998 → 2013 · Axor model year 09/2001 → 10/2004 · Econic · ZetrosCLAAS Xerion, Tucano	144242	
4800-21A		<ul style="list-style-type: none">Volvo commercial vehiclesScraper tractor dumpers	162185	
4800-23		<ul style="list-style-type: none">ISUZU trucksMITSUBISHI commercial vehicle Fuso CanterNISSAN forkliftsYALE GDP/GLP 16-30	144273	
4800-25		<ul style="list-style-type: none">MAN buses such as Lions Coach · Lions Star · Lions Comfort · Lions CityMERCEDES-BENZ Citaro model year 01/1998	203857	
4800-26		<ul style="list-style-type: none">DAF CF and XF Euro 6 from 2013	214495	
4800-27		<ul style="list-style-type: none">MERCEDES-BENZ Atego from model year 2014	214501	
4800-28		<ul style="list-style-type: none">MERCEDES-BENZ Actros EURO 6 with HEYCO equalising tank from model year 2014	214518	
4800-29		<ul style="list-style-type: none">SCANIA 143, G-/P- and R series	222780	



4501-2, EAN-No. 4000896203499

Fuel and AdBlue® line pliers

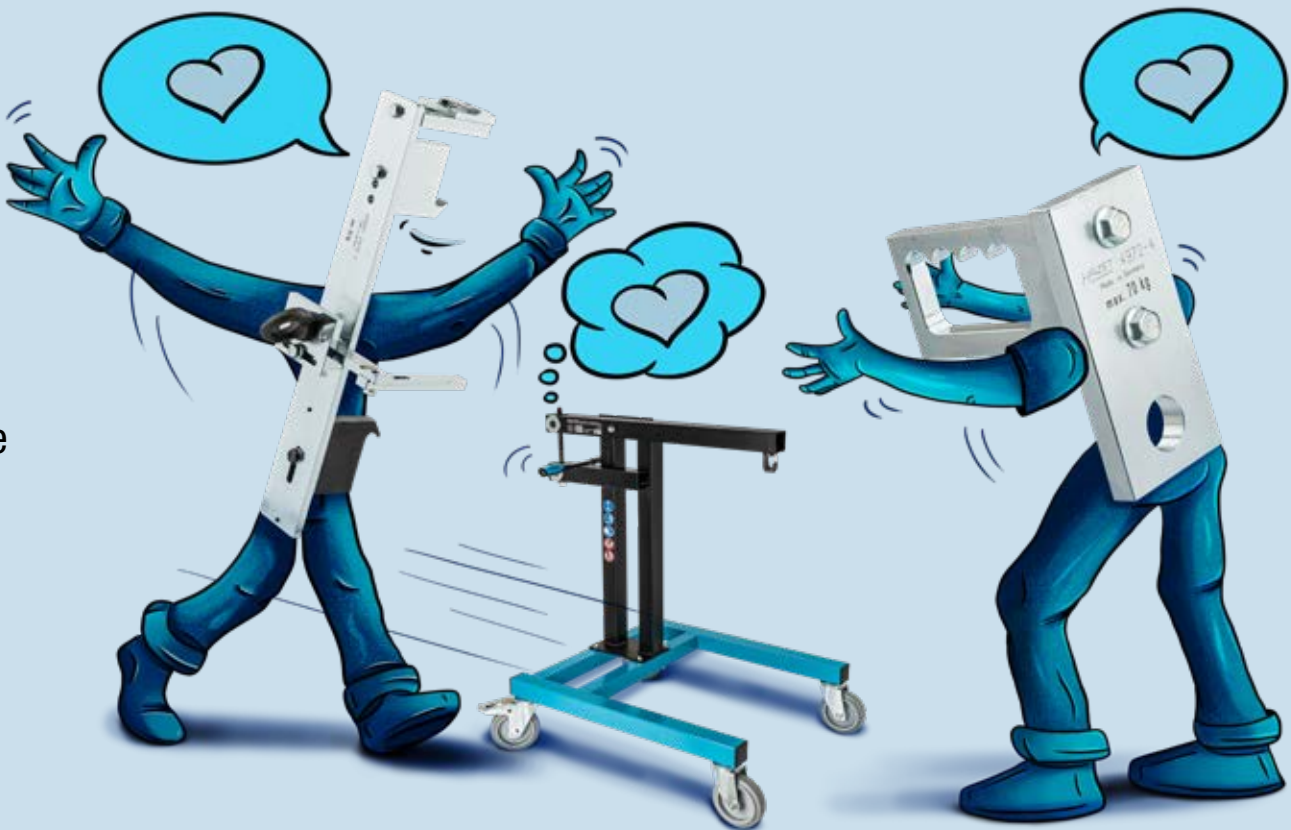
- Simple operation of quick-release fasteners on fuel lines
- Volvo D13 · D16 · MAN D3876 LF · D1556 LF · D2676 LF and SCANIA engines
- CLAAS agricultural machinery with MAN engine
- AdBlue® lines and AdBlue® injection nozzles on agricultural machinery

Problem solver!

Made in Germany

Commercial vehicle lifting aid

- » Back-friendly and safe work when servicing brakes
- » For working in areas with restricted access, e.g. in commercial vehicle wheel arches
- » Facilitates removal/installation of brake callipers and wheel hubs, no second person necessary any more
- » "Made in Germany"



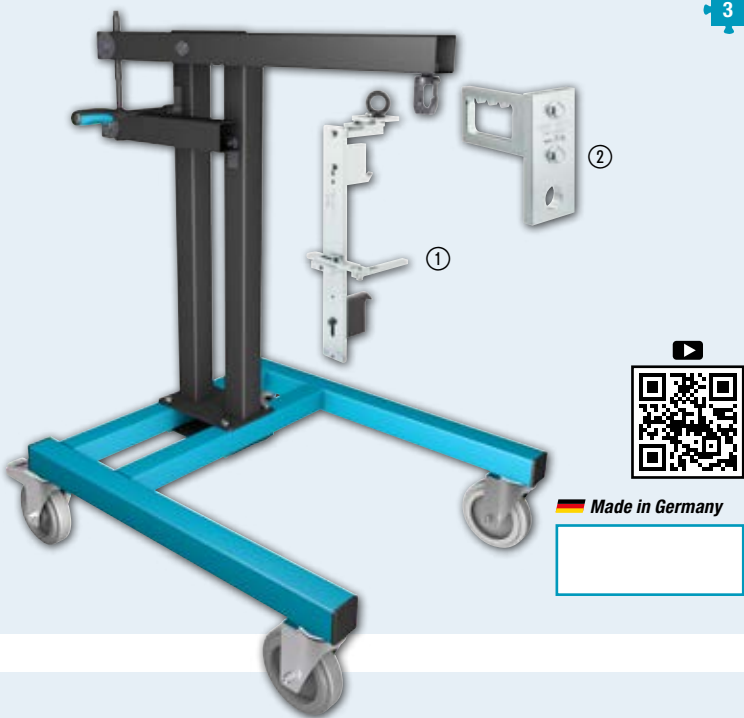
4972-1/3, EAN-No. 4000896215799

Commercial vehicle lifting aid

- Allows you to work safely, without straining your back, in tight spaces in the wheel arch on trucks, buses, trailers and trailer axles
- Significantly easier work when assembling and disassembling brake callipers and wheel hubs thanks to lifting aid
- No strain on the back
- Second person not required
- Makes screw tightening easier
- Secure hold for heavy components
- Takes the various installation situations of the brake calliper into consideration
- Secure movement with suspended components
- One-hand operation possible via spindle

Contents:

- Lifting aid
- Brake calliper holder
- Wheel hub holder



Made in Germany

Accessories

No.	HAZET No.	Designation	Function	EAN-No. 4000896+	
①	4972-1	Commercial vehicle brake calliper holder	Use with lifting aid 4972-3 or 4972-1/3	215423	
②	4972-4	Wheel hub holder	Use with lifting aid 4972-1/3	216031	

• Suitable for all brake callipers and wheel hubs

• Brake calliper removal and installation with just one tool

• All brake service work can be carried out without straining your back

• Compatible with all brake callipers that have European type approval

4972-2, EAN-No. 4000896215393

Swivel bearing

- For disassembly and assembly of brake calliper in trucks, buses, trailers and trailer axles that are installed in a diagonal "clockwise position between 8 o'clock and 5 o'clock"
- Connect swivel bearing to brake calliper holder and position with e.g. jacking carriage below brake calliper. This enables easy insertion of the screws even in awkward positions
- Together with brake calliper holder HAZET 4972-1



Made in Germany



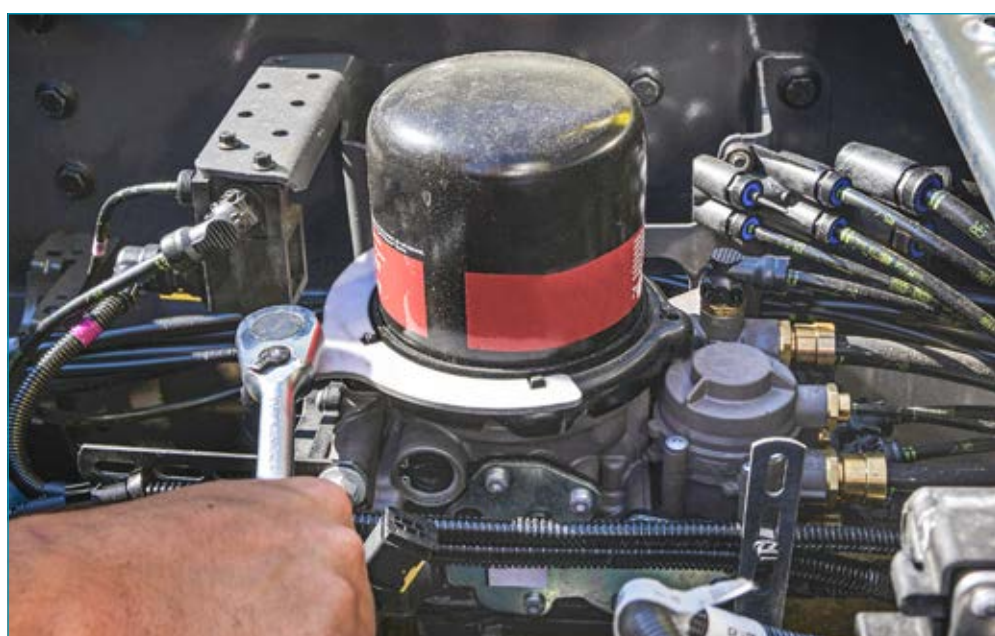
4971-12, EAN-No. 4000896232857

Brake resetting tool

- Resetting **WABCO** brake callipers without removing the brake cylinder
- Good accessibility of the resetting device
- Easy operation with the 3-component HAZET handle
- Operation with tried and tested HAZET ratchet wrench
- Special insert in the ratchet wrench ensures safe power transmission on the resetting device
- For **WABCO** brake calliper in **MERCEDES-BENZ** Actros, Antos, Arocs
- Length (total): 454,4 mm
- Adapter ≤ 8 mm
- Ratchet wrench 10 mm



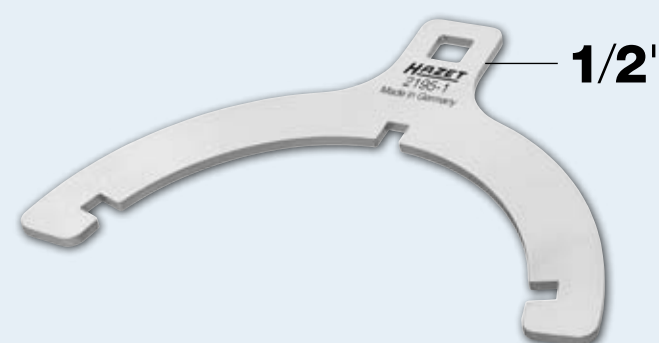
Made in Germany



2195-1, EAN-No. 4000896228898

1/2" cartridge wrench

- Granulates cartridge with retaining ring is installed on **KNORR-BREMSE** air dryers with electronic parking brake (EPB) in **RENAULT** Trucks series T and C as well as in **Volvo** FH
- Torque-controlled tightening via integrated square 12,5 mm (1/2") possible with e.g. HAZET torque wrench 5120-3CT
- Operation of the granulates cartridge with retaining ring



Made in Germany



2872-E18 · 2872-E20 · 2872-E24

3/4" TORX® slogging wrench with 2 striking faces

- For loosening and tightening **TORX®** screws on brake calliper fittings on the front axle and trailing axles of trucks
- Use of the wrench for assembly and disassembly of the brake calliper fittings renders the disassembly of the steering tie lever unnecessary
- Correct tightening of screws with torque wrench using a 20 mm (3/4") drive in accordance with the manufacturer's specifications
- For e.g. **MAN** TGL TGM wrench sizes: E18, E20, E24
- **2872-E20** e.g. on **Schmitz** Cargobull Trailer axles

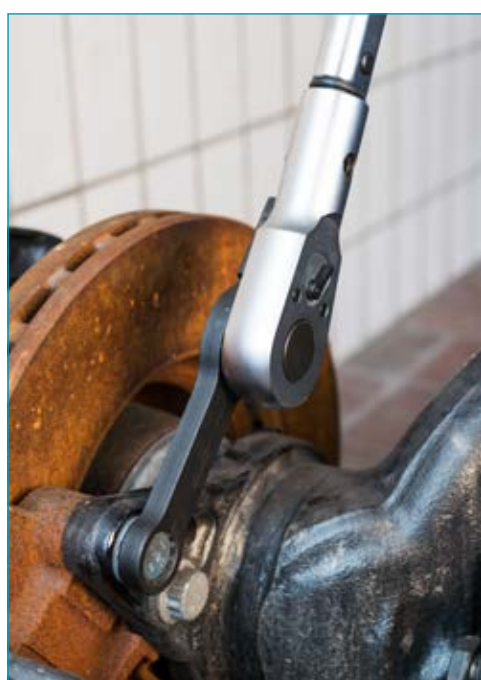
Made in Germany

HAZET No.		Length mm	g	Effective length mm	Head width mm	Head thickness mm	EAN-No. 4000896+	
2872-E18	E18	215	573	120	30	12	201235	
2872-E20	E20	216	577	120	32	12	201242	
2872-E24	E24	219	588	120	38	12	201259	

3/4"



Wrench flat with laser-engraved formula for calculating the correct effective length!



2872SZ-24 · 2872SZ-26 · 2872SZ-27 · 2872SZ-30

3/4" Commercial vehicle box-end wrench (12-point) with 2 striking faces

- 12-point profile facilitates application even on hard-to-reach fittings
- For e.g. **SAF**-brake calliper on **MERCEDES-BENZ** Atego and Actros
- Wrench with 20 mm (3/4") 4-point insertion hole for the correct tightening of screws with HAZET torque wrench in accordance with the manufacturer's specifications
- Wrench flat with laser-engraved formula for calculating the correct effective length

Made in Germany

HAZET No.	For operation of the brake calliper screw connection on e.g.	mm	Length mm	EAN-No. 4000896+	
2872SZ-24	SAF-brake calliper, MERCEDES-BENZ Atego and Actros	≤ 24	219.0	204175	
2872SZ-26	DAF XF95/XF105/XF	≤ 26	219.0	203727	
2872SZ-27	MERCEDES-BENZ Atego, Actros, KÄSSBOHRER buses	≤ 27	220.5	207183	
2872SZ-30	SCANIA series 3, 4, G, P, T, R, S and bus	≤ 30	225.5	246281	



NEW!

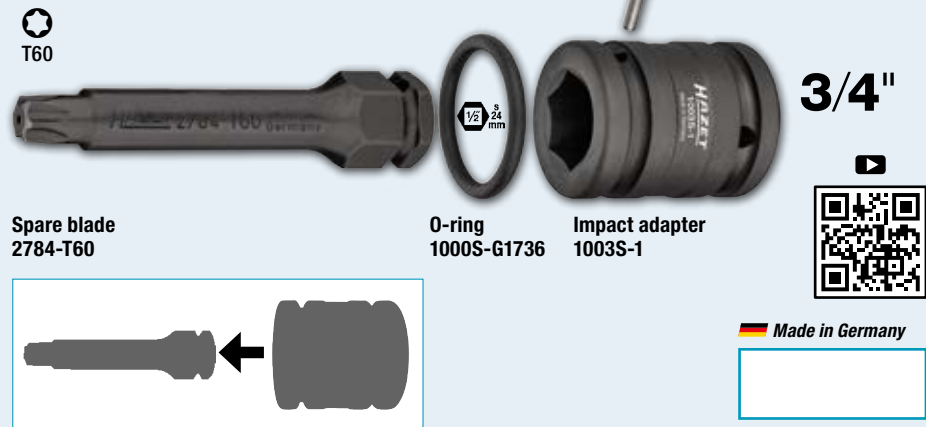
With 3/4" drive for torque wrenches!



2784-T60/4, EAN-No. 4000896188611

3/4" screwdriver socket set for brake discs

- For impact operation
- For the operation of the brake disc screw connections on **MERCEDES-BENZ Actros**
- Length (total): 154.5 mm



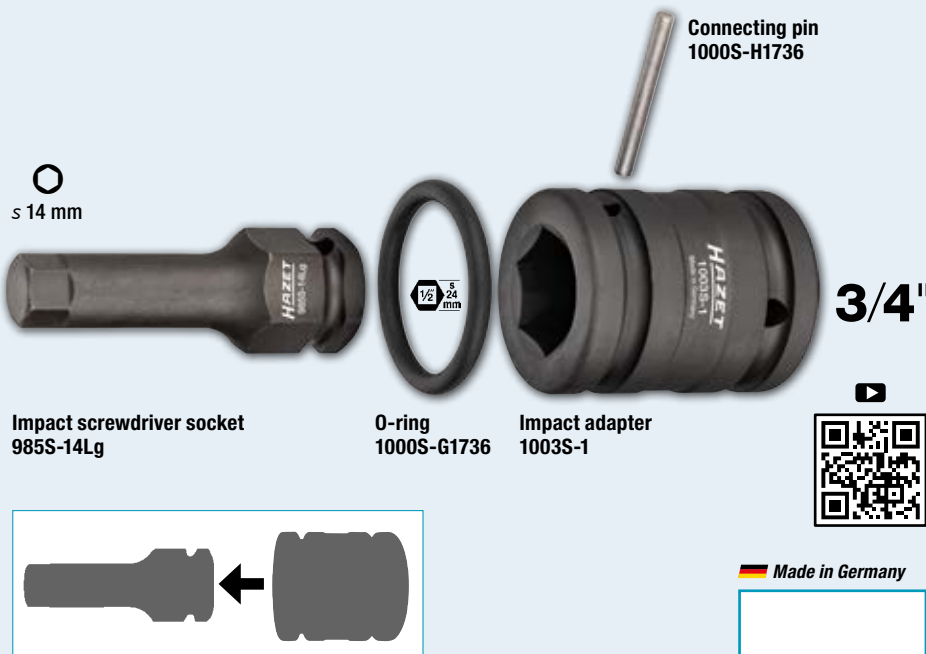
Made in Germany



985S-14LG/4, EAN-No. 4000896243686

Brake calliper screwdriver socket

- For the operation of the brake calliper screw connections (**KNORR-BREMSE**) on **MERCEDES-BENZ** trucks e.g. Actros, Arocs, Antos and buses such as e.g. Citaro, CapaCity Turismo, Intouro and Travego
- Operation of gearbox screw connections as well as screw connections is possible on frame and chassis
- Impact wrench operation is possible with e.g. HAZET 9013TT
- Length (total) 109 mm



Made in Germany



4971-11, EAN-No. 4000896218257

Brake calliper resetting tool **KNORR-BREMSE**

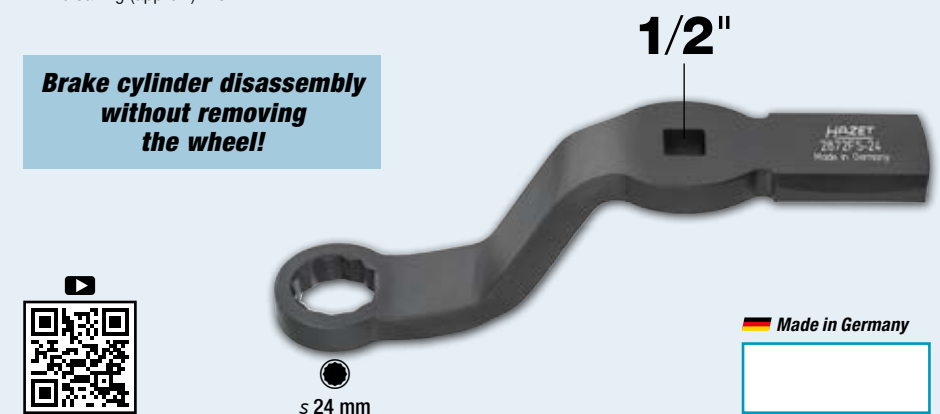
- For operation of the readjusting tool on disc brakes **KNORR-BREMSE**
- For readjusting the brake calliper **KNORR-BREMSE** via nut-driver
- **Special 11 tooth profile**
- Suitable for brake callipers **KNORR-BREMSE** on trucks, buses, trailers and trailer axles of all brands



2872FS-24, EAN-No. 4000896209989

1/2" Commercial vehicle box-end wrench (12-point) with 2 striking faces

- **No need to remove the wheel, even if brake cylinder fittings protrude far into the rim**
- Use in trucks, buses, trailers and trailer axles without removing the wheel
- **For loosening or tightening brake cylinder fittings**
- Laser-engraved formula for rapid conversion of the tightening torque specified by the manufacturer
- 2 impact areas enable the force to be applied using a hammer
- Time saving (approx.): 20 min



2784-14, EAN-No. 4000896155583

3/4" brake calliper screwdriver socket

- For the operation of the brake calliper screw connections (**KNORR-BREMSE**) on **MERCEDES-BENZ** trucks e.g. Actros



Made in Germany

4969-612, EAN-No. 4000896204281

Compressed air quick-connector releasing tool

- **Easy loosening of quick-connectors with Ø 6, 8, 10, 12 mm**
- For operation with open-end wrench s 13 mm (HAZET 600N-13), no further tools necessary
- For plug connectors DIN 74324 6 x 1.0 · 8 x 1.0 · 10 x 1.0 · 12 x 1.5 · 12 x 2.0 mm
- Enables separating contaminated tubes and plug connectors
- To be used by one person
- Time saving and therefore also cost saving
- Prevention of injuries



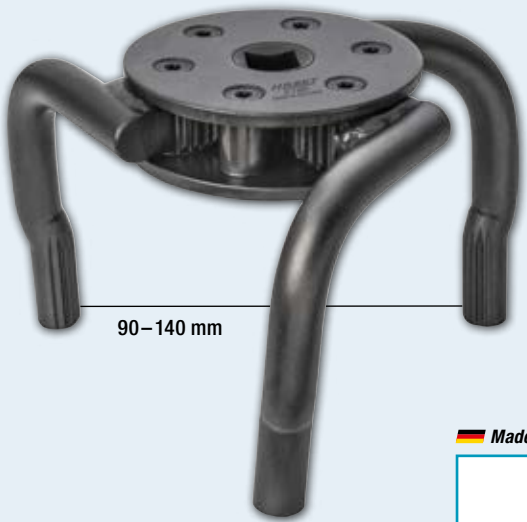


2195, EAN-No. 4000896**014101**

125 1/2

1/2" cartridge wrench

- For loosening the granulates cartridges
- Forged design
- MAN No. 8099606-0307



Made in Germany



2168-46, EAN-No. 4000896**156252**

10 3/8

**3/8" AdBlue® filter wrench
MERCEDES-BENZ**

- For operation of the filter housing cap when replacing the filter element for **AdBlue® filters (urea solution filter element)** on **MERCEDES-BENZ** commercial vehicles with BlueTec® engines e.g. Actros, Atego, Axor, Eonic
- The tightening torque recommended by the vehicle manufacturer (please follow the instructions of the manufacturer) is reached e.g. with the torque wrench HAZET 5110-3CT
- Forged design



3/8"

Made in Germany

2169-32, EAN-No. 4000896**082346**

10 3/8

**3/8" AdBlue® filter wrench
MAN**

- For installing and removing oil filters and oil filter housing caps when changing the oil filter element
- Forged design
- For urea solution filter Ad-Blue® MAN e.g. TGX



3/8"

Made in Germany

**Safe loosening and tightening of
oil filter and AdBlue® covers!**

2169-36, EAN-No. 4000896**086566**

10 3/8

3/8" oil filter wrench

- For **MERCEDES-BENZ** vans, Actros MP 1, MP 2
- For **MAN** fuel filters, e.g. TGA
- Forged design
- Surface: chrome-plated



3/8"

Made in Germany



2169-9, EAN-No. 4000896**116690**

125 1/2 24

**1/2" commercial vehicle
oil filter wrench**

- For the operation of oil filters e.g. from MANN and MAHLE/KNECHT
- For e.g.: **Volvo, SCANIA, RENAULT, MAN, IVECO, FIAT, FODEN, IRISBUS, ASTRA, CATERPILLAR, LIEBHERR, JOHN DEERE, KOMATSU, FAUN, MITSUBISHI**
- The torque value recommended by the vehicle manufacturer can be safely achieved, e.g. with a HAZET torque wrench (Attention: observe the manufacturer's tightening torque value)



1/2"

s 24 mm

Made in Germany

For over
1600
applications!

2171-1 · 2171-2

125 1/2

1/2" oil filter wrench

- Steel strip adjustable to seven positions
- Operation of oil filters e.g. as an assembly tool for oil and fuel filters on **MAN** commercial vehicles



Made in Germany

No.	HAZET No.	Length mm	Ø mm	EAN-No. 4000896 +	
①	2171-1	160	80-110	013418	
②	2171-2	220	75-110	013432	

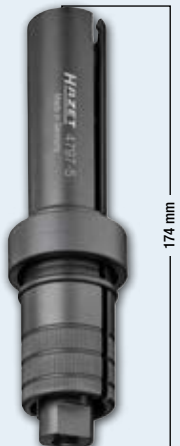


4797-5, EAN-No. 4000896176137

Injector extractor

- For disassembly of tight common rail injectors without removing the cylinder head
- For the simple removal of injectors together with sliding hammer, e.g. HAZET 1788T-1, on **MAN** engines D08, D20, D26 and D28
- Especially suited to the very limited space in the cylinder head
- Due to the tool's special claw, the injector may be gripped with caution, damage-free removal with the aid of the impact extractor
- Injector claw with inside thread M10 x 1.5 mm for insertion of the sliding hammer 1788T-1

 Made in Germany



Can only be used in combination with 1788T-1!

1788T-1, EAN-No. 4000896134304

Sliding hammer

- With coupler thread M 10 (sliding weight 200 g)
- Together with injector extractor 4797-5
- Coupler thread M10
- Incl. union nut

 Made in Germany



4550-21, EAN-No. 4000896204137

1/2" injection line wrench DAF

- The special design of the socket ensures proper seat of the injection line fitting
- For the operation of the union nut on the high-pressure line on the injection valve-common rail injection system
- Open double hexagon socket for injection lines
- The tightening torque required by the manufacturer is achieved by using a torque wrench, for example, the HAZET 5120-3CT (observe manufacturer specifications)
- **DAF** Euro 6 engines MX11/MX13 e.g. XF, CF
- Surface: burnished



 Made in Germany

2850-E20 · 2850-E24

3/4" TORX® impact socket

- **For the operation of cylinder head bolts**
- Long, reinforced design
- With borehole for locking pin or safety spring and groove for o-ring
- Surface: phosphatized, oiled



 Made in Germany

HAZET No.	mm	EAN-No. 4000896 +	
2850-E20	18.49	079681	
2850-E24	22.16	146758	

4550N-22, EAN-No. 4000896234387

1/2" injection line wrench MAN

- The special design of the socket ensures proper seat of the injection line fitting
- Open double hexagon socket for injection lines
- The tightening torque required by the manufacturer is achieved by using a torque wrench, for example, the HAZET 5120-3CT (observe manufacturer specifications)
- Output: outside double hexagon profile s 22 mm
- Surface: burnished



 Made in Germany

4550-3, EAN-No. 4000896104307

3/8" injection line wrench

- Open double hexagon socket for injection lines
- For the operation of screwed connections on injection lines of **MAN** trucks with D 20 engines – Common rail injection systems
- Surface: chrome-plated



 Made in Germany

4558, EAN-No. 4000896021888

1/2" pressure nut crown wrench

- For the operation of the compression nut at the nozzle holder
- For **MAN** and **MERCEDES-BENZ** trucks M 401/421, M 402/422, LA, A, M 403/423, M 470h
- Surface: chrome-plated



 Made in Germany

4550-2, EAN-No. 4000896021734

1/2" injection line wrench

- Open double hexagon socket
- For the operation of screw connections on injection lines e.g. for **MERCEDES-BENZ**
- Surface: chrome-plated



 Made in Germany

Axle repair precision tools

- » Much greater ease for axle repairs and maintenance work
- » For trouble-free removal/installation work on many commercial vehicles
- » High fitting accuracy and perfect seating
- » Robust HAZET quality "Made in Germany"*

*except 772-2/16

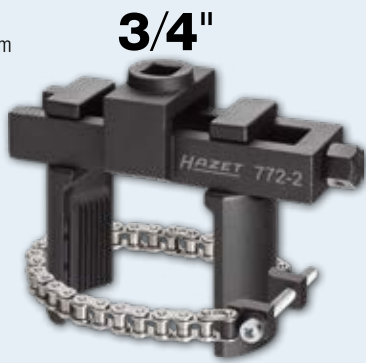


772-2/16, EAN-No. 4000896161041

20 3/4 16

3/4" universal tool set for axle and slotted nut wrench set

- For removal and precise installation, e.g. with 6-point and 8-point nuts, slotted nuts, face nuts, round nuts with drilled holes, round nuts with pin holes, etc.
- Clamping range: 35 – 170 mm
- Torque (max.): 700 Nm
- 16-pieces in HAZET Safety-Insert-System soft foam insert



4937-85 · 4937-90 · 4937-95

20 3/4 36

Commercial vehicle axle nut socket

- Solid design: high (shape) stability even with very high loosening or tightening torques
- Surface: burnished



Made in Germany

No.	HAZET No.	Drive	Output mm	Application	EAN-No. 4000896 +	
①	4937-85	● s 36	s 85	SAF trailer axles	204267	
②	4937-90	● s 36	s 90	IVECO Daily 6,5 t; 7,0 t	199280	
③	4937-95	20 3/4	s 95	IVECO Stralis and Eurofire, MERCEDES-BENZ Discos Trailer, BPW Eco plus	199457	

4937-80, EAN-No. 4000896199006

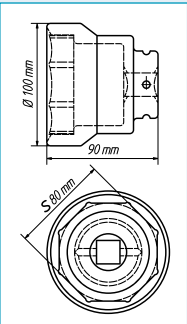
20 3/4

3/4" commercial vehicle axle nut socket, 8-point, s 80 mm

- For removal/installation of the front axle nut with 8-point in front of the brake disc
- SCANIA series R, series 4, series 124 – 144 I – etc.
- Suitable for impact wrenches, e.g. HAZET 9013M
- Precise fit
- Parallel surfaces for perfect force fit on axle nuts
- Solid design: high (shape) stability even with very high loosening or tightening torques



3/4"



Made in Germany

4937-105/2, EAN-No. 4000896201938

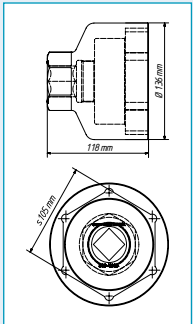
25 1" 60 2

1" commercial vehicle axle nut socket set DAF, RENAULT, Volvo

- 6-point output: s 105 mm
- Drive: 25 mm (1") and outside 6-point s 60 mm
- Screw-in guide tube allows for flexible application
- DAF with guide tube
- RENAULT, Volvo without guide tube
- With outside guide collar



1" 60



Made in Germany



4937-92, EAN-No. 4000896201952

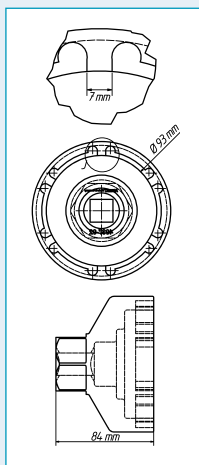
20 3/4" 46

3/4" commercial vehicle pin wrench for front axle MAN

- Pin wrench for: **MAN** trucks: E 2000 (ÖAF), F 2000, M 2000 L, M 2000 M
- **MAN** TGA, TGM, TGS, TGX
- **MAN** buses: Lions City, Lions Classic, Lions Coach, Lions Regio, Lions Star as well as older constructions (models), chassis
- **NEOPLAN** Cityliner, Starliner, Tourliner, Trendliner
- **TEMSA** Diamond, **WISEON** high-decker
- Diameter: 114 mm



3/4" 46



Made in Germany

4937-62, EAN-No. 4000896199020

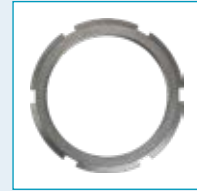
20 3/4"

3/4" commercial vehicle pin wrench for rear axle MERCEDES-BENZ

- Pin wrench for rear axle nuts
- **MERCEDES-BENZ** Actros, Atego (heavy design): LN2, SK rear axle
- With outside guide collar
- Inside Ø: 62.8/70 mm
- 6 inside pins, pin width: 7.5 mm
- Length (total): 85 mm



3/4"



Made in Germany

4937-101/4, EAN-No. 4000896199266

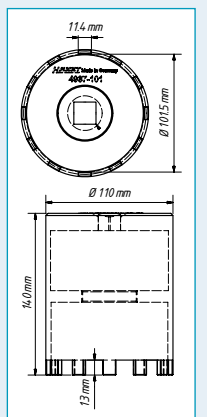
20 3/4" 4

3/4" commercial vehicle pin wrench set for rear axle MERCEDES-BENZ

- For dismantling / assembly work on the rear axle as well as repair and maintenance work on the wheel hub, wheel bearing or brake disc
- **MERCEDES-BENZ** hub-reduction axle, such as trailing axle NR7/4
- **MERCEDES-BENZ** hub-reduction rear axles (Euro-axes) 10 t and 13 t,
- **MERCEDES-BENZ** hub-reduction axle 7 t AL7/1
- Inside Ø: 101.5 mm
- Length including guide tube (total): 140 mm
- 12 pins, width of pins: 11.4 mm
- With 3 replaceable guide tubes
- Outside Ø: 50, 51, 53 mm
- Length (total): 85 mm



3/4"



Slotted nut

Made in Germany

4937-103/3, EAN-No. 4000896199259

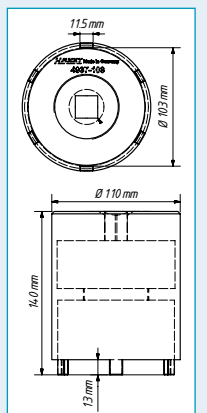
20 3/4" 3

3/4" commercial vehicle pin wrench set for rear axle MAN and MERCEDES-BENZ

- For repair and maintenance work on the wheel hub, wheel bearing or brake disc
- For **MAN** and **MERCEDES-BENZ** 10 t and 13 t AP Hypoid and tag axle N7/4, bus 0305G, 0405G
- **MAN** hub-reduction rear axle F series H7, HD7
- Hypoid rear axle F series HY-1175, HDY-1175
- Inside Ø: 103 mm
- Length including guide tube (total): 140 mm
- 6 pins, width of pins: 11.5 mm
- With 2 replaceable guide tubes
- Outside Ø: 51.5 mm, 66.5 mm
- Length (total): 135 mm



3/4"



Slotted nut

Made in Germany

4937-111/2, EAN-No. 4000896201945

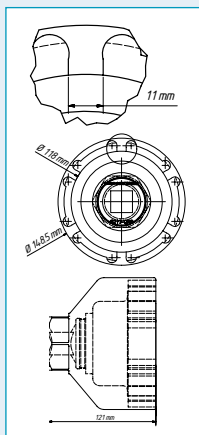
25 1" 60 2

1" commercial vehicle pin wrench set for rear axle MAN

- For **MAN** TGX, TGA, TGS e.g. rear axle: HY 1350
- 4-point drive: 25 mm (1") as well as outside 6-point: s 60 mm
- 6 pins, width: 11 mm
- Inside Ø: 134.5 mm
- Inside Ø: (pin-pin): 118 mm
- Outside Ø: 148.5 mm



1" 60



Made in Germany



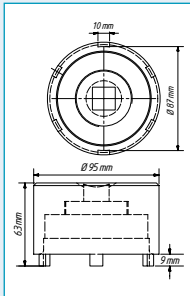


4937-87/3, EAN-No. 4000896**199235**

3/4" commercial vehicle pin wrench set for MAN, MERCEDES-BENZ

- For repair and maintenance work on the wheel hub, wheel bearing or brake disc
- For e.g. **MAN** TGL front axle since 2000 and L 2000 **MERCEDES-BENZ** Atego rear axle HL2, 814 Vitaro
- Pin wrench for rear axle, inside \varnothing : 87 mm
- Length (total): 65 mm
- 6 pins, width of pins: 10 mm
- With 2 replaceable guide tubes
- Outside \varnothing : 49 mm, 57 mm
- Length including guide tube (total): 140 mm

20 3/4 3



Made in Germany



3/4"



4937-7588, EAN-No. 4000896**202003**

Commercial vehicle mounting sleeve SAF – thread M 75 x 1.5 right/left

- The bushing has both a left and a right thread, M 75x1.5
- For **SAF** axles with disc and drum brakes with \varnothing 88 mm bearing seat
- Only lift the 40 kg bearing unit (bearing + brake disc + wheel hub) onto the mounting bushing once, then push up to the bearing seat
- Outside \varnothing : 88 mm
- Drive via lateral rod or without additional tools is possible (handle surface)



Made in Germany

4937-7578, EAN-No. 4000896**201990**

Commercial vehicle mounting sleeve MERCEDES-BENZ – thread M 75 x 1.5

- Mounting sleeve to protect the thread on the axle during bearing disassembly and assembly
- Use in **MERCEDES-BENZ** Atego, Atego 2, Tourino
- Only lift the approx. 40 kg bearing unit (bearing + brake disc + wheel hub) onto the mounting sleeve once, then push up to the bearing seat with \varnothing 78 mm
- Thread: M 75 x 1.5
- Outside \varnothing : 78 mm
- Drive via lateral rod or without additional tools is possible (chequered handle surface)



Made in Germany

4937-7582, EAN-No. 4000896**201969**

Commercial vehicle mounting sleeve MAN – thread M 75 x 1.5

- Mounting sleeve to protect the thread on the axle during bearing disassembly and assembly
- Use with **MAN** TGL, TGM, L series, HL 2
- Only lift the approx. 40 kg bearing unit (bearing + brake disc + wheel hub) onto the mounting sleeve once, then push up to the bearing seat with \varnothing 82 mm
- Thread: M 75 x 1.5
- Outside \varnothing : 82 mm
- Drive via lateral rod or without additional tools is possible (chequered handle surface)



Made in Germany

4937-110 • 4937-120 20 3/4 25 1"

Commercial vehicle hub cap socket, \varnothing 110 mm and 120 mm for flat oval BPW hub cap

- For **BPW** Eco and Eco Plus axles
- Perfect fit for **BPW** contour \varnothing 110 mm or \varnothing 120 mm



Made in Germany

HAZET No.		\varnothing mm	EAN-No. 4000896 +	
4937-110	20 1	110	199273	
4937-120	25 3/4	120	210459	



4937-26/3 • 4937-27/3 12 1/2 3
1/2" commercial vehicle centring sleeve set

- For fast assembly of centred truck drop centre rim wheels for rim hole \varnothing 26 mm
- No damage to the thread as well as exact centring of the rims thanks to conically cranked sleeves
- Length (total): 115 mm



Made in Germany

HAZET No.	For rim hole \varnothing 26 mm	EAN-No. 4000896 +	
4937-26/3	M22 x 1.5 e.g. DAF, FORD, MAN, MERCEDES-BENZ, RENAULT, Volvo	199013	
4937-27/3	3/8"-11G e.g. SCANIA	202010	



4937-100, EAN-No. 4000896**201983**

Commercial vehicle mounting sleeve MAN – thread M 100 x 1.5

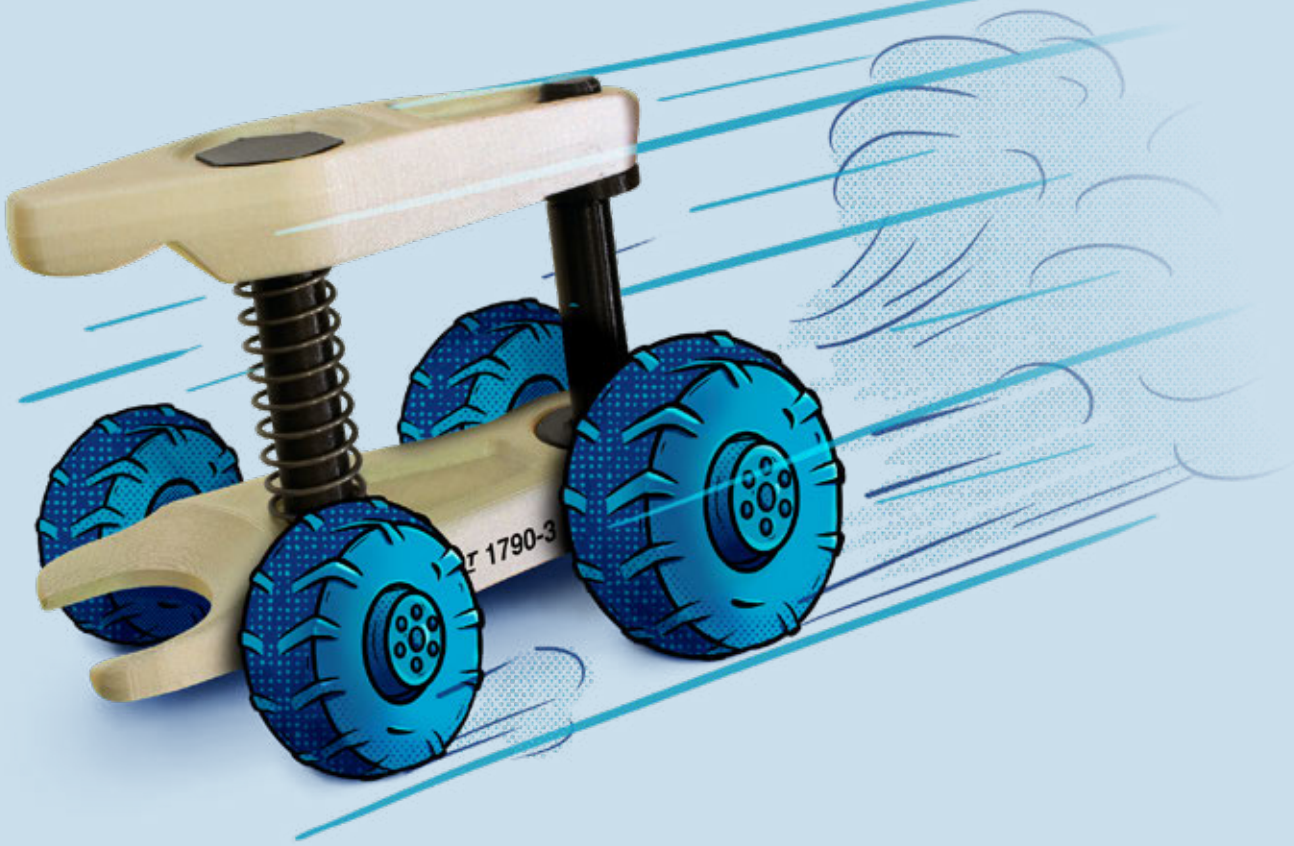
- Mounting sleeve to protect the thread on the axle during bearing disassembly and assembly
- Use with **MAN** TGL, TGA, TGS e.g. for **MAN** HY 1350 axle (13 t)
- Only lift the approx. 40 kg bearing unit (bearing + brake disc + wheel hub) onto the mounting sleeve once, then push up to the bearing seat with \varnothing 105 mm
- Thread: M 100 x 1.5
- Outside \varnothing : 105 mm
- Drive via lateral rod or without additional tools (chequered handle surface) is possible



Made in Germany

Puller

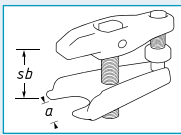
- » Universal use with many commercial vehicles
- » Safe removal of ball joint pivots and ball joints
- » Well suited for quick repair
- » Robust designs "Made in Germany"



1779-3, EAN-No. 4000896135998

Universal ball joint puller

- Universal application e.g. for trucks, lightweight design
- Jaw opening a : 32 mm
- Clamping range sb : 85 mm

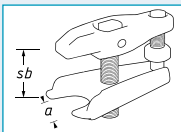


Made in Germany

1790-3, EAN-No. 4000896145454

Ball joint puller

- For extracting the ball joint pivots of steering arms, steering tie rods, stabilisers
- Jaw opening a : 40 mm
- Clamping range sb : 85 mm



Made in Germany

1779-55, EAN-No. 4000896136407

Ball joint puller

- For removing the ball joint pivots of steering tie rods, stabilizers, etc.
- Jaw opening: 55 mm
- Clamping depth: 80 mm
- Width: 77 mm

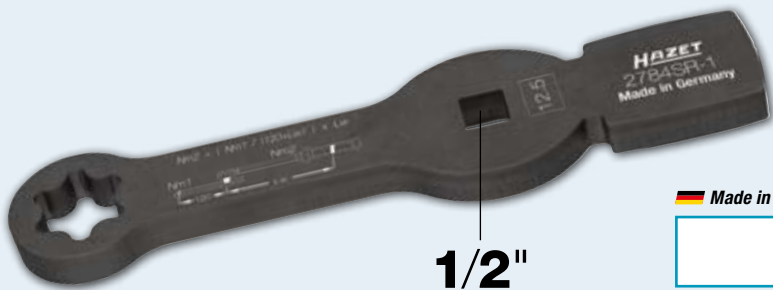


Made in Germany

2784SR-1, EAN-No. 4000896229758

1/2" striking face wrench (special profile)

- Special application in case of lack of space due to design and very low vehicle body
- Optimised special profile for damage-free attachment of the flat-head lightweight nuts
- Wrench flat with laser-engraved formula for calculating the correct effective length
- For the operation of the lightweight nuts on the frame, fifth-wheel coupling, front carrier and vibration damper with special profile **MERCEDES-BENZ** on the Actros, Antos, Arocs, model year 2016 →
- Surface: phosphatized



Made in Germany

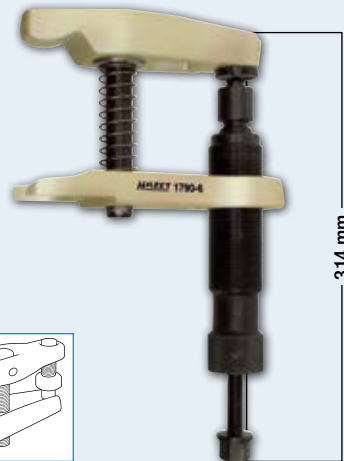
1/2"



1790-5 · 1790-6

Ball joint puller

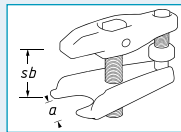
- For the easy extraction of ball joint pivots and safe removal of ball joints
- Supported by hydraulic system
- Load (max.): 12 t



314 mm

Made in Germany

HAZET No.	a mm	sb mm	EAN-No. 4000896 +
1790-5	30–34	70	145461
1790-6	36–40	85	145478



2784S-1 · 2784SLg-1

1/2" impact socket (special profile) MERCEDES-BENZ

- Optimised special profile for damage-free attachment of the flat-head lightweight nuts
- For the operation of the lightweight nuts on the frame, fifth-wheel coupling, front carrier and vibration damper with special profile **MERCEDES-BENZ** on the Actros, Antos, Arocs, model year 2016 →
- Surface: phosphatized
- Output: groove profile



1/2"

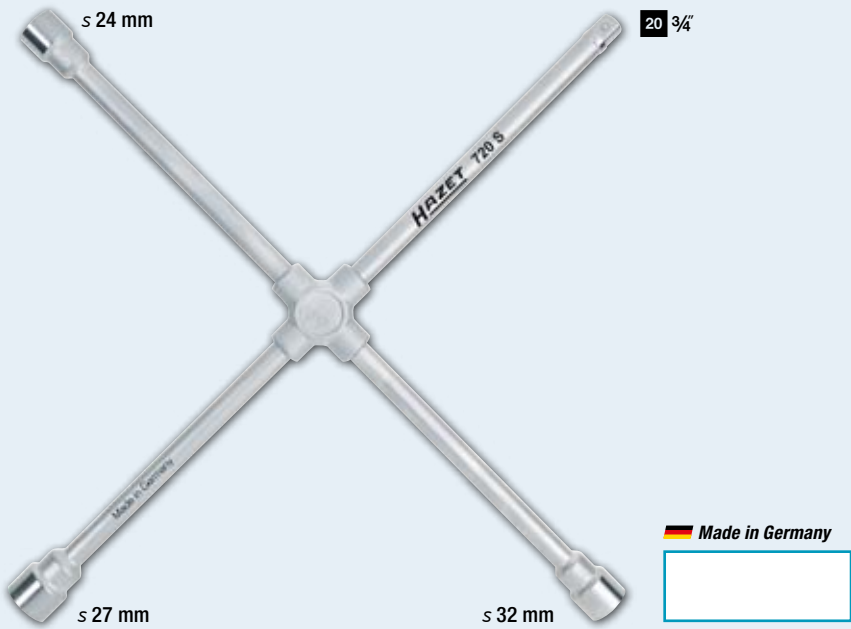


Made in Germany

HAZET No.	Type	Length mm	EAN-No. 4000896 +
2784S-1	short	46	213252
2784SLg-1	long	75	218240

720S, EAN-No. 4000896029532
Four-way rim wrench

- Forged central piece
- Length (total): 750 mm



652 · 653
Tyre lever

- Heavy design



Made in Germany

HAZET No.	Length mm	g	EAN-No. 4000896 +	
652	600	1,130	028702	
653	456	630	028719	

1004S · 1104S
Impact socket (6-point)

- DIN 3129, ISO 2725-1
- Wrench size: 32 mm

20 3/4" 25 1"

1004S-32

- Especially long 6-point socket design e.g. for deep wheel nuts and bolts on commercial vehicles
- For impact operation
- Surface: phosphatized



1004S-33

- Extra long pattern
- E.g. for deeply located wheel nuts and bolts on commercial vehicles
- With borehole for locking pin or safety spring and groove for o-ring


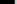
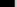
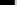


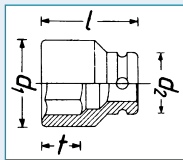
1104S-32

- For impact operation
- With bolt for locking pin retaining
- Surface: phosphatized



Made in Germany

HAZET No.		Length mm	d ₁ mm	d ₂ mm	t mm	EAN-No. 4000896 +	
1004S-32		400	48.0	44.0	32.0	055784	
1004S-33		400	48.0	44.0	32.0	055791	
1104S-32		270	48.5	54.0	30.5	002665	



4961N-23/12, EAN-No. 4000896186754

12

Wheel hub grinder

- Special grinder for optimal cleaning of the bearing surface of a wheel rim (wheel hubs) on trucks and transporters with stud bolt
- Hook and loop fastener for quick changing of grinding wheels
- Grinding wheels for moderate and heavy soiling
- With hexagon insert for firm hold at the device
- 8-point profile for safe and firm fixation
- Inside Ø (max.): 23 mm
- Grinding wheels Ø: 56 mm

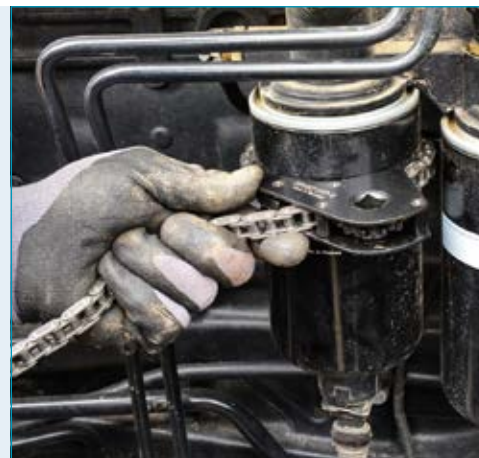


Made in Germany

For stud bolts!
No wheel hub chippings!

Agricultural and commercial vehicle specialty tools

- » Oil filter chain wrench and releasing tool for working in areas with restricted access
- » Radiator tester to check for leakage, e.g. in cooling systems
- » Operating tools for attachments, multi-fingers or taper key extractors
- » Problem solver for agricultural and commercial vehicles "Made in Germany"



2171-8LG, EAN-No. 4000896203703

125 1/2"

1/2" commercial vehicle oil filter chain wrench, open

- Clamping range 50–150 mm
- For removing oil filters and the operation of air dryer cartridges
- Especially suited to limited space
- Opening of the oil filter chain wrench facilitates application even in places which, due to the construction, cannot be reached from above with an operating tool



2168-1, EAN-No. 4000896223251

125 1/2"

1/2" commercial vehicle fuel filter wrench

- For use of fuel filter housing in construction machinery and agricultural machinery
- Easy operation with integrated square, 12.5 mm (1/2")
- For e.g.: **CLAAS** Torion, **LIEBHERR** wheel loaders and wheel loaders with Euro 6 emission standard and **LIEBHERR** engines, **JOHN DEERE** tractors series 6M, 6R · tractor series 7R · combine harvester series T · combine harvester series W · self-driving field sprayers R403, R4040L, R4050L · bulldozer 700K · Deere excavator 210G LC · harvesters 1070G, 1170G · forwarders 1110G, 1210G, 1510G · crawler forest cranes 2154G, 2154G · log loaders 2156G, 2156G LC · trailers-mounted forest cranes 337E, 437E · wheel loaders 524K, 524K-II, 524L, 544K, 544L · **Hagie** sprayers STS 10, STS 12 · **Mazzotti** MAF

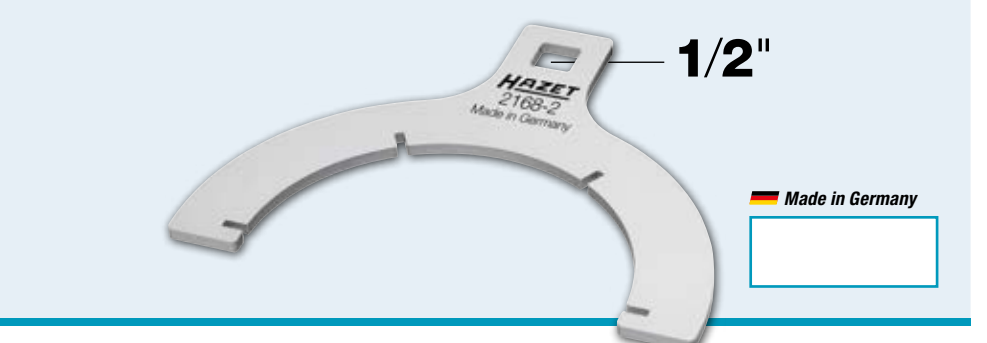


2168-2, EAN-No. 4000896226870

125 1/2"

1/2" fuel filter wrench

- Can be used easily, even in areas with restricted access
- For operating the fuel filter housing when changing the fuel filter cartridge on **FORD** Duratorq 2.2 TDCI engines, Transit Custom from 04/2012 →, Tourneo Custom from 04/2012 →, Transit from 08/2013 →





4685
Taper key extractor
• Safe removal of taper keys from gear wheels on agricultural machinery

4685-1, EAN-No. 4000896222889
Taper key extractor • Straight



Made in Germany

4685-2, EAN-No. 4000896222896
Taper key extractor • Bent



Made in Germany



Tool with suitable profile for quick coupler



Attaching the tool



Secure hold thanks to integrated magnets



Operating using ratchet with inserted 12.5 mm (1/2") 4-point socket

4685-3, EAN-No. 4000896230730
CLAAS operating tool
• For manual operation of attachments for CLAAS JAGUAR, e.g. ORBIS, PICK UP, DIRECT DISC and CORIO CONSPEED
• 3 magnets ensure secure hold on the quick coupler
• Precise positioning of the tool on the quick coupler
• Saves on second worker by turning alone using 12.5 mm (1/2") ratchet (e.g. HAZET 916HP)
• Simple turning of the attachment possible
• Safe tool actuation outside the danger zone
• Light aluminium tool
• Especially adapted to requirements in field use

125 1/2

Facilitates work on the CLAAS maize header!



Made in Germany



4685-4, EAN-No. 4000896231126
Tubular socket wrench
• For dismounting/mounting the multi-fingers on CLAAS, LEXION, TUCANO and AVERO combine harvesters
• Multi-finger operation possible through the very narrow opening on the feed drum
• Easy to drive with introduced square by means of a 12.5 mm (1/2") ratchet (e.g. HAZET 916HP)
• Application of torques on multi-fingers possible
• With 6-point output: s 24 mm

125 1/2



Disassembly/assembly with just one tool!

Made in Germany



4800/6, EAN-No. 4000896216482
Radiator tester for agricultural machinery

6

- Checking for leakage in cooling systems and heating circuits
- 4800-1 Cooling pump to 2.5 bar
- 4800-2 Intermediary piece, flexible hose
- 4800-3 Radiator adapter for **AMAZONE** Pantera, **CLAAS** Jaguar · Lexion · Scorpion · Ares · Atlas · Ceres, **FENDT**, **MASSEY FERGUSON** with tank no. 180224M92 and 4296015M1, **CASE** Quadtrac · Magnum
- 4800-4A Radiator adapter for **CASE** Puma · SBS · LBS · Optum · Maxxum · CVX, **NEW HOLLAND** TVT · T7, T7 Elite Pack · T6, **FENDT** Vario model year 2000 → Combine harvester L series, **CLAAS** Arion · Axion, **DEUTZ** engines 3.6 PowerPack · BF6M1013FC · TCD2013L6 2V and 4V Genset 250kV
- 4800-5A Radiator adapter for **FENDT** Farmer 300 model year 1988 → · Type 500 · Type 700 · Vario model year 1988 → 2000
- 4800-20 Radiator adapter for **CLAAS** Xerion · Tucano as well as all new **CLAAS** machines with **MERCEDES-BENZ** expansion tank
- Classification to vehicles:
www.hazet.de → The Tool Finder → Service → Radiator adapters 4800

Suitable for all manufacturers!



Made in Germany

2135-3000, EAN-No. 4000896231157

Sledgehammer

- Very well suited for tearing up metre-long pieces and driving aluminium wedges into wood
- Easy penetration into the wood due to specially polished cutting edge (lamella grinding technique)
- Ergonomically shaped original USA hickory wooden handle with non-slip grip end
- Impact protection sleeve to increase the service life in case of mishits (safety wedging)
- Incl. leather blade guard
- Cutting width: 75 mm
- Handle length: 900 mm
- Weight (net): 3,000 g



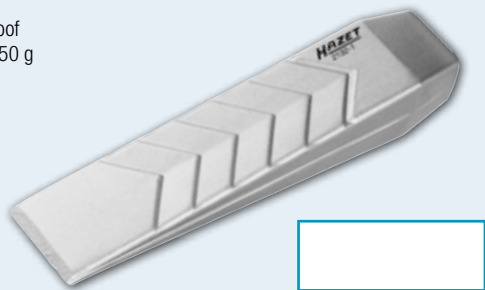
Stable striking face!

 Made in Germany

2132-1, EAN-No. 4000896244805

Aluminium felling wedge • straight

- Ideal for felling trees or ripping logs
- Conical design makes for easy cutting into wood as well as simple felling and targeted work on trees
- Forged aluminium wedge is lightweight and shatterproof
- High handling comfort thanks to light weight of only 550 g



2132-2, EAN-No. 4000896244799

Aluminium splitting wedge • rotated

- The rotated, conical shape of the splitting wedge allows for easy, targeted penetration into wood and log splitting
- Especially suitable for continuous operation by professionals
- Forged aluminium wedge is lightweight and shatterproof
- High handling comfort thanks to light weight of only 800 g



2133-1250, EAN-No. 4000896231133

Wood axe

- Tool head and tool handle with triple safety wedging
- To increase service life, the handle is specially protected by an impact protection sleeve in case of failure
- Incl. silicon cutting guard
- Cutting width: 132 mm
- Handle length: 700 mm
- Weight (net): 1,250 g



Strike powerfully and divide!



 Made in Germany

2134-1250, EAN-No. 4000896229529

Riving axe

- High splitting effect due to optimised head shape
- Hollow forged spreading wedges prevent the axe from jamming in the wood
- Impact protection sleeve to increase the service life in case of mishits
- Incl. leather blade guard
- Cutting width: 92 mm
- Handle length: 500 mm
- Weight (net): 1,250 g



Easier splitting thanks to spreading wedges!



 Made in Germany

2132-600, EAN-No. 4000896231140

Hand axe

- Handy helper, especially suitable for splitting firewood and cutting off small branches
- Tool head and tool handle with double safety wedging
- Incl. silicon cutting guard
- Cutting width: 105 mm
- Handle length: 360 mm
- Weight (net): 600 g



Versatile!



 Made in Germany

2132-3, EAN-No. 4000896244607

Pickaroon

- Allows logs to be safely moved and lifted
- Ergonomically shaped handle sits comfortably in the hand
- Handle made of genuine USA hickory wood, without defects or splinters
- Use for forestry work in the woods or for working firewood
- Professional double wedging between tool head and handle
- Especially suitable for continuous operation by professionals
- Incl. rubber protective sleeve
- Handle length: 400 mm
- Weight (net): 550 g



Moving wood made easy!



4650-4, EAN-No. 4000896022038

Battery pole and terminal brush

- Cleaning the terminal posts and clamps
- With protective cover

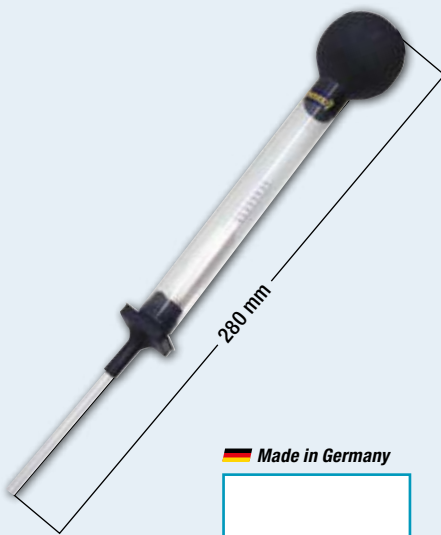


Made in Germany

4650-1, EAN-No. 4000896022014

Acid tester

- For checking the acid content of the battery fluid
- With aerometer
- Solid plastic housing – significantly reduced risk of breakage compared to glass enclosures



Made in Germany



2152N/3, EAN-No. 4000896204151

Electronic set

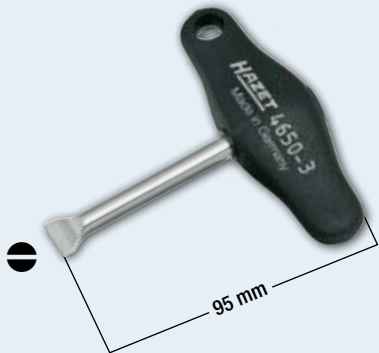
- For troubleshooting on electronic components
- Measuring range 3–48 V
- Voltage display LED: 5, 12, 24, 48 V
- Polarity display: LED for positive or negative, AC voltage with illuminated LED
- Additional crocodile clip and probe tip for attaching
- Cable length: 1,300 mm
- Probe tip, needle with sliding mechanism



4650-3, EAN-No. 4000896102051

Special tool for battery plugs

- Special length allows universal application in areas with restricted access
- For screwing battery plugs in and out
- Profile is especially suitable for battery plugs
- Plastic T-handle
- Surface: chrome-plated
- Screwdriver width: 14.5 mm
- Screwdriver height: 1.7 mm

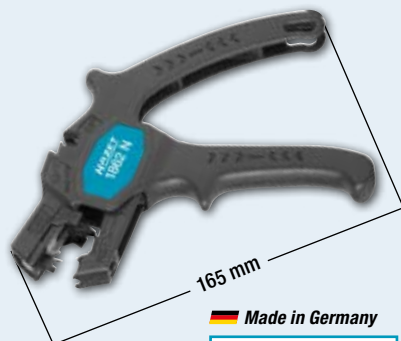


Made in Germany

1862N, EAN-No. 4000896242627

Automatic wire stripper

- Automatic scanning system, no adjustment to the cable cross-section necessary
- Stripping of flexible cables (stranded wire) and solid conductors \varnothing 0.2–6.0 mm² or AWG 24–10
- Optimally positioned diagonal cutter up to 2.5 mm²
- Adjustable length stop: 6–15 mm
- Replaceable blades
- Not for work on or near electrically live parts



Made in Germany

839-1, EAN-No. 4000896035670

Voltmeter

- 220–250 V according to standard VDE 0680
- Slotted blade, concave ground
- Extra long handle, 92 mm
- With clip
- Defective glow tube not replaceable according to VDE
- Length (total): 150 mm



Made in Germany

4670-9/5, EAN-No. 4000896205042

Commercial vehicle system cable release tool assortment

- Guarantees damage-free release of the most common commercial vehicle contacts
- Malfunctions due to loose contacts can be remedied easily, quickly and professionally
- With sliding caps protecting the blades from damage and avoiding the risk of injury
- OEM quality – "Made in Germany"



For damage-free release of flat plug contacts!

Made in Germany

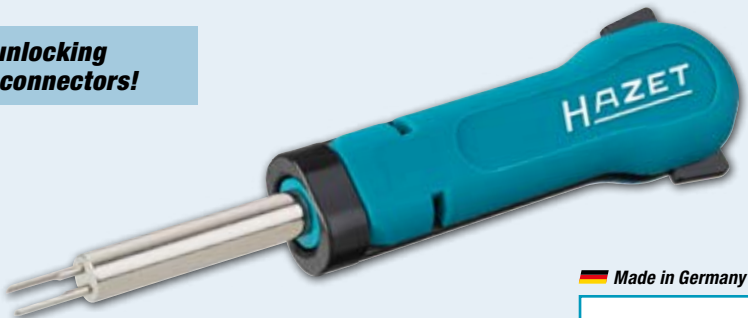


4672-11, EAN-No. 4000896135561

System cable release tool

- Installed on MERCEDES-BENZ Actros, Antos, Arocs
- For damage-free release of flat plug contacts
- Malfunctions due to loose contacts can be remedied easily, quickly and professionally
- With sliding caps protecting the blades from damage and avoiding the risk of injury
- MCP 1.5 mm/contact width 1.5 mm
- OEM quality – "Made in Germany"

For unlocking HDSCS connectors!



Made in Germany



2152-600, EAN-No. 4000896246762

Multimeter

- For measuring voltage, resistance, frequency, capacitance and temperature
- For trade, industry, and DIYers as well as passenger car, commercial vehicle and agricultural workshops
- Easy operation thanks to clearly arranged control panel and large illuminated LCD display (all data quickly readable)
- Very short response times ensure rapid display of measurement results
- Optimal device alignment thanks to the stand on the housing
- Protective cover protects multimeter against damage from being dropped
- Temperature probe from -20 °C to 200 °C included
- Diode test
- During the continuity test, the integrated buzzer signals continuity below 50 Ω
- Duty cycle
- AC voltage/DC voltage.: 0–600 V
- DC/AC: 0–10 A
- Frequency: 0–10 MHz
- Resistance measurement: 0 to 60 MΩ
- Automatic switch-off
- Backlight
- Data hold
- True RMS
- CAT III 600V
- Including measuring tips for clipping into the protective cover and 2 x AA batteries

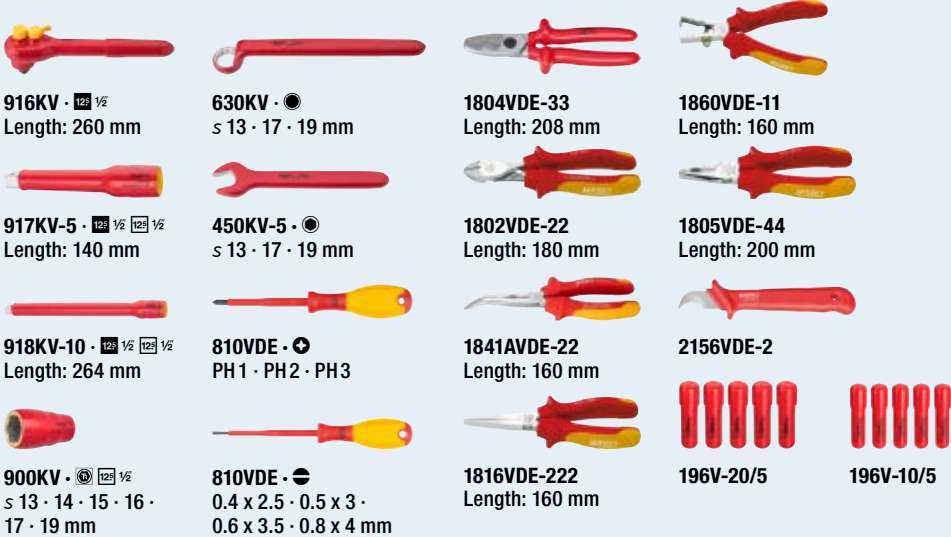


NEW!

150/39, EAN-No. 4000896239641

1/2" high-voltage tool set, with protective insulation

- Universally applicable on all trucks and buses, as well as agricultural and construction machinery with electric drives
- For operation of live components such as batteries, capacitors or distributors
- The use of two extensions enables simple and safe installation and removal of e.g. the battery thanks to the special insulation of the tools
- All the relevant tools for the operation of live fittings in one set
- Highest level of safety through constant quality control of the tools
- Delivery in new HAZET L-Boxx 136 – all tools ready to hand
- For e-trucks from e.g.: **MERCEDES-BENZ, MAN, DAF, RENAULT, SCANIA** and **Volvo**
- Suitable for use with electric urban buses such as e.g. **MERCEDES-BENZ, MAN, VDL, IVECO, SOLARIS, Volvo, SCANIA, BYD, SILEO, LIKKER, COBUS, MELLOR, KARSAN, IRIZAR, EBUSCO, TEMSA, EURABUS, EASYMILE, NAVJA, LOCAL MOTORS, HEULIEZ**



L-BOXX



L-Boxx 136

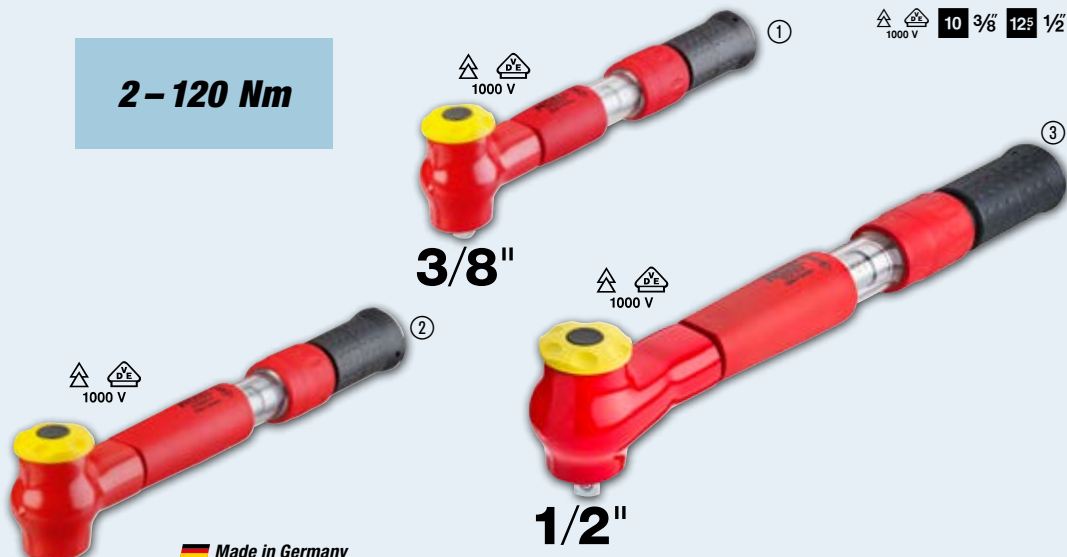
5108KV · 5109KV · 5121KV

3/8" or 1/2" torque wrench, with protective insulation

- Right/left release with plug-in square, thereby tightening at torque setting both to the right and to the left within the specified tolerance
- Can be readjusted and recalibrated
- Possible repairs for the torque wrenches in the HAZET Service Centre
- High durability
- Accuracy through the option of: Disassembly, adjustment, repair (if necessary), calibration, assembly
- Suitable for control of inspection and test equipment
- Sustainable and environmentally sound
- Fine scale graduation with vernier scale
- Locking against unintentional adjustment of the setting value
- Safe torque release: palpable (close-gap release), audible ("click" sound)
- Low weight for good handling and fatigue-free work
- DIN EN ISO 6789-2:2017, Square according to DIN 3120, ISO 1174-1, IEC 60900:2018



2 – 120 Nm



Made in Germany

No.	HAZET No.		Torque range Nm	Length mm	Release accuracy tolerance %	b mm	EAN-No. 4000896 +	
①	5108KV	12½ ½	2 – 10	275	6	590	235421	
②	5109KV	12½ ½	5 – 25	305	4	639	235445	
③	5121KV	12½ ½	20 – 120	420	4	1470	233397	



600N/21, EAN-No. 4000896023356

Combination wrench set

- Surface: chrome-plated, head polished
- DIN 3113 form A, ISO 3318, ISO 7738
- \leq 6 · 7 · 8 · 9 · 10 · 11 · 12 · 13 · 14 · 15 · 16 · 17 · 18 · 19 · 21 · 22 · 24 · 27 · 30 · 32 · 34 mm
- Output: outside 12-point traction profile



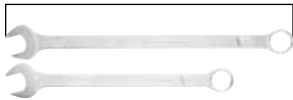
Made in Germany

600Lg/10 · 600Lg/13

Combination wrench, extra long, slim design



Extra long style



Made in Germany

HAZET No.		S mm	EAN-No. 4000896 +
600Lg/10	10	10 · 11 · 12 · 13 · 14 · 15 · 16 · 17 · 18 · 19	218424
600Lg/13	13	10 · 11 · 12 · 13 · 14 · 15 · 16 · 17 · 18 · 19 · 21 · 22 · 24	218417

606N/12, EAN-No. 4000896197378

Ratcheting combination wrench set

- Surface: chrome-plated, head polished
- DIN 3113 form A, ISO 3318, ISO 7738
- \leq 8 · 9 · 10 · 11 · 12 · 13 · 14 · 15 · 16 · 17 · 18 · 19 mm
- Dimensions (L x W x H): 355 x 235 x 65 mm



810U-1/5, EAN-No. 4000896179572

Screwdriver set

- With hex bolster (for use with a wrench) and impact cap
- Surface: blade matt chrome-plated, tip burnished
- \ominus 0.8 x 4.5 · 1 x 5.5 · 1.2 x 7 mm
- \oplus PH1 · PH2



3K System



With hex bolster
(for use with a wrench)



Impact cap

810T/6 · 810/6

Screwdriver set

- With hanging hole in handle
- Surface: blade matt chrome-plated, tip burnished



3K System



810T/6



810/6

HAZET No.	Contents	EAN-No. 4000896 +
810T/6	\oplus T10 · T15 · T20 · T25 · T27 · T30	204304
810/6	\ominus 0.5 x 3 · 0.8 x 4 · 1 x 5.5 · 1.2 x 6.5 mm \oplus PH1 · PH2	058808



606/5 · 606/6-1

Ratcheting combination wrench sets



HAZET No.		S mm	EAN-No. 4000896 +
606/5	5	8 · 10 · 13 · 17 · 19	177998
606/6-1	6	21 · 22 · 24 · 27 · 30 · 32	175178

HiPer fine-tooth reversible ratchets

- » Complete range: 1/4", 3/8", 1/2"
- » 10 versions, extendable or with safety lock, among other features
- » Maximum power: almost double DIN!
(916HP 1,000 Nm, DIN 512 Nm)
- » High precision: 90 teeth
- » 4° operating angle for restricted spaces
- » Developed and produced by HAZET
"Made in Germany"

HiPer
HIGH PERFORMANCE
THE ORIGINAL
MADE IN GERMANY

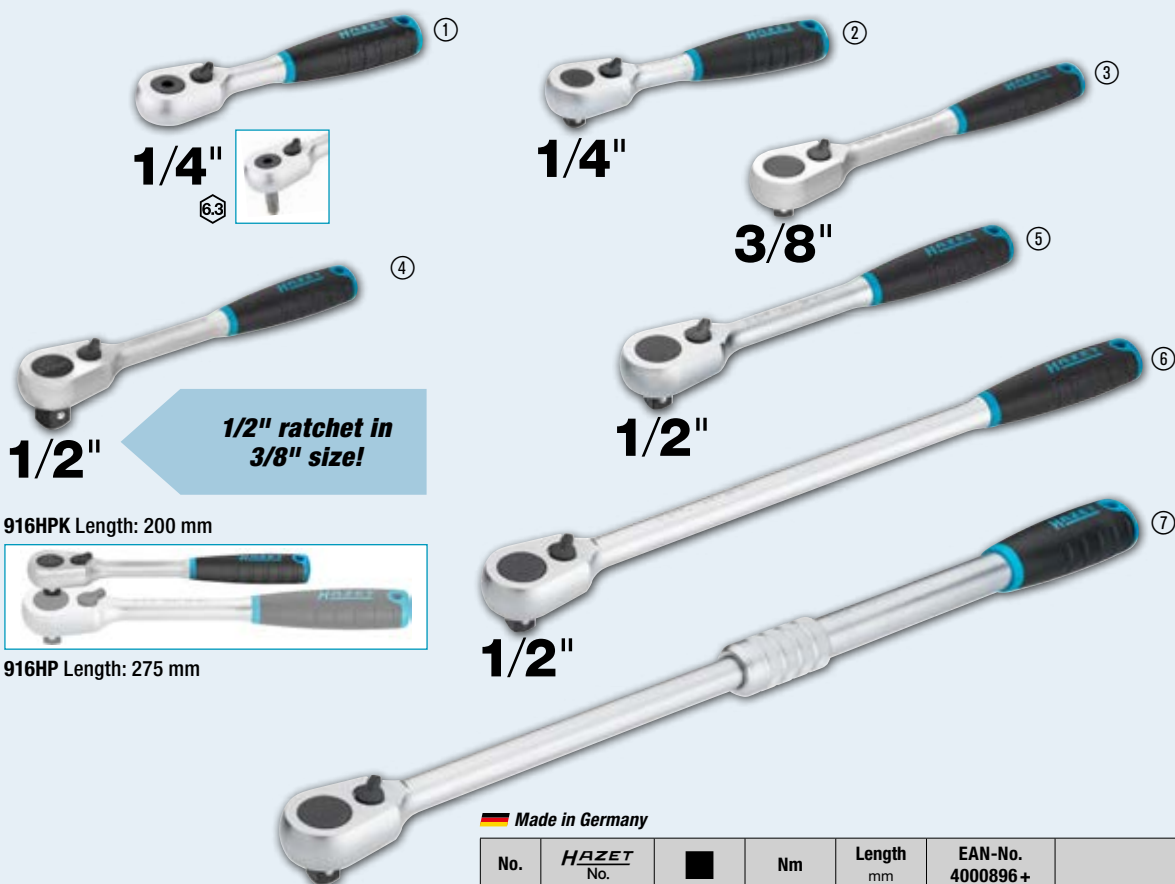


HiPer (HP)

Fine-tooth reversible ratchet

- A lot more power than with ratchets of the same dimensions
- HAZET internal quality standards guarantee loading capacity far beyond the standard requirements

6.3 1/4 6.3 1/4 10 3/8 12.5 1/2



916HPK Length: 200 mm

916HP Length: 275 mm

HiPer
HIGH PERFORMANCE
THE ORIGINAL
MADE IN GERMANY

90
4°

Made in Germany

No.	HAZET No.		Nm	Length mm	EAN-No. 4000896 +	
①	863HPB	6.3 1/4	120	116	235346	
②	863HP	6.3 1/4	120	116	226917	
③	8816HP	10 3/8	400	200	235063	
④	916HPK	12.5 1/2	400	200	244379	
⑤	916HP	12.5 1/2	1000	275	213894	
⑥	916HPL	12.5 1/2	1000	415	219209	
⑦	916HPLG	12.5 1/2	1000	414-614	233076	



HiPer (HPS)

Fine-tooth reversible ratchet with safety locking

- Loosening-proof locking thanks to push button actuation
- Attached tools can easily be released by pressing the button with just one hand

6.3 1/4 10 3/8 12.5 1/2



Made in Germany

No.	HAZET No.		Nm	Length mm	EAN-No. 4000896 +	
①	863HPS	6.3 1/4	62	116	237234	
②	8816HPS	10 3/8	340	200	237241	
③	916HPS	12.5 1/2	850	275	237258	

HiPer
HIGH PERFORMANCE
THE ORIGINAL
MADE IN GERMANY

90
4°

SOCKETS



1000, EAN-No. 4000896000616

3/4" socket set

- Sheet metal box (HAZET blue)
- Soft foam insert
- Dimensions (L x W x H): 578 x 235 x 88 mm

Contents

- Reversible ratchet head 1016
- Socket 1000
- Extension 1017-8
- Extension 1018
- Handle bar 1014
- Sliding head 1015-1



Made in Germany

1100Z, EAN-No. 4000896002504

1" socket set

- With 12-point sockets
- Sheet metal box (HAZET blue)
- Dimensions (L x W x H): 759 x 305 x 115 mm

Contents

- Reversible ratchet head 1116
- Socket 1100Z
- Extension 1117-8 · 1117-16
- Handle bar 1114
- Sliding head 1115-1
- Universal joint 1121



Made in Germany

900SK/10, EAN-No. 4000896246434

1/2" impact socket set

- Particularly suitable together with short 1/2" impact wrenches e.g. HAZET 9012ATT
- With borehole for locking pin or safety spring and groove for o-ring
- Surface: phosphatized, oiled
- DIN 3129, ISO 2725-2
- For impact operation
- Length (total): 29 mm
- s 13, 14, 15, 16, 17, 18, 19, 21, 22, 24 mm



Extra short style!

HAZET No.	d ₁ mm	d ₂ mm	t mm
900SK-13	20.8	25	7.0
900SK-14	22.1	25	7.0
900SK-15	23.5	30	7.2
900SK-16	24.8	30	7.2
900SK-17	26.2	30	7.2
900SK-18	27.5	30	8.7
900SK-19	28.8	30	11.0
900SK-21	31.3	30	11.5
900SK-22	32.5	30	12.3
900SK-24	35.0	30	12.2

NEW!

In 1/9 soft foam insert

Made in Germany

1007S-7/4 · 1003S-07

Impact adapter

- The enormous force of the 20 mm (3/4") drive results in high load on and increased wear of the 12.5 mm (1/2") output. The hexagon adaptation means the 12.5 mm (1/2") output is replaceable, making the adapter more versatile!
- With replaceable 12.5 mm (1/2") plug-in blades
- For impact operation
- With borehole for locking pin or safety spring and groove for o-ring

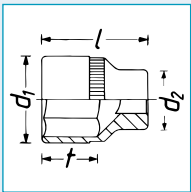


Made in Germany

HAZET No.	Designation	EAN-No. 4000896 +
1007S-7/4	Impact adapter	215416
1003S-07	Replaceable plug-in blades	215409

1000SLG · 1100SLG
Impact socket (6-point)

- Long design
- With borehole for locking pin or safety spring and groove for o-ring
- Surface: phosphatized, oiled
- DIN 3129, ISO 2725-2



Made in Germany

HAZET No.	Length mm	d ₁ mm	d ₂ mm	t mm	EAN-No. 4000896 +
1000SLg-24	100	39.5	44	17	001392
1000SLg-27	100	43.5	44	19	001408
1000SLg-30	100	47.5	44	21	001422
1000SLg-32	100	50.0	44	21	001439
1000SLg-33	100	51.5	44	21	001446
1000SLg-36	100	55.0	44	23	001460



Made in Germany

HAZET No.	Length mm	d ₁ mm	d ₂ mm	t mm	EAN-No. 4000896 +
1100SLg-24	110	41.5	54	17	002405
1100SLg-27	110	45.0	54	19	002412
1100SLg-30	110	49.0	54	21	002429
1100SLg-32	110	51.5	54	21	002436
1100SLg-33	110	52.5	54	21	002443
1100SLg-36	110	56.5	54	23	002467
1100SLg-38	110	59.0	54	24	002474
1100SLg-41	110	63.0	54	26	002481
1100SLg-46	110	69.5	54	28	002498

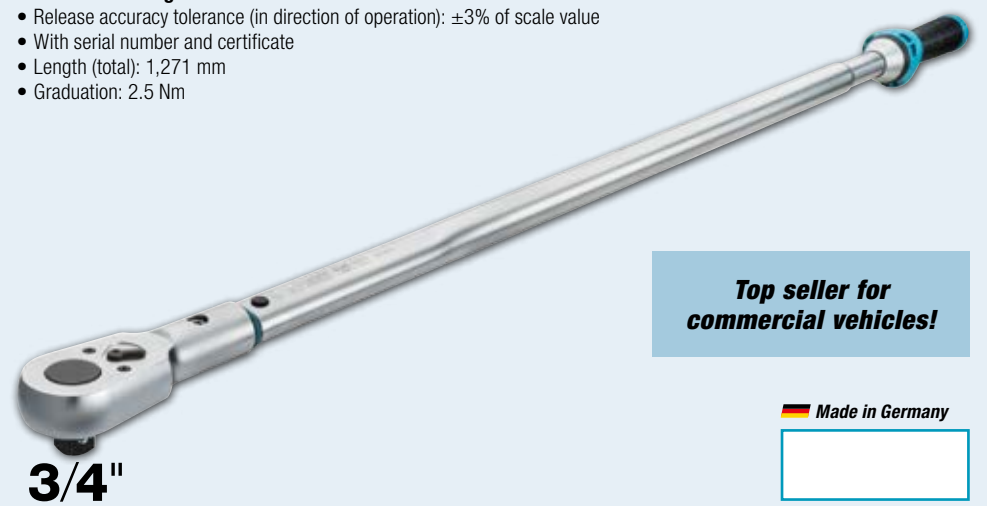
SYSTEM 5000-3CT torque wrenches – Our classic workshop tool!

- » Large measuring range: 2.5–800 Nm
- » 6 versions with $\frac{1}{4}$ ", $\frac{1}{2}$ ", $\frac{3}{4}$ " reversible ratchet for commercial vehicle screw connections
- » Accuracy: $\pm 3\%$ of scale value
- » HAZET's own service centre for best aftersales service
- » Developed and produced by HAZET "Made in Germany"



5145-3CT, EAN-No. 4000896218929 $\frac{3}{4}$ " torque wrench 300–800 Nm

- No more turning back!
- Release accuracy tolerance (in direction of operation): $\pm 3\%$ of scale value
- With serial number and certificate
- Length (total): 1,271 mm
- Graduation: 2.5 Nm

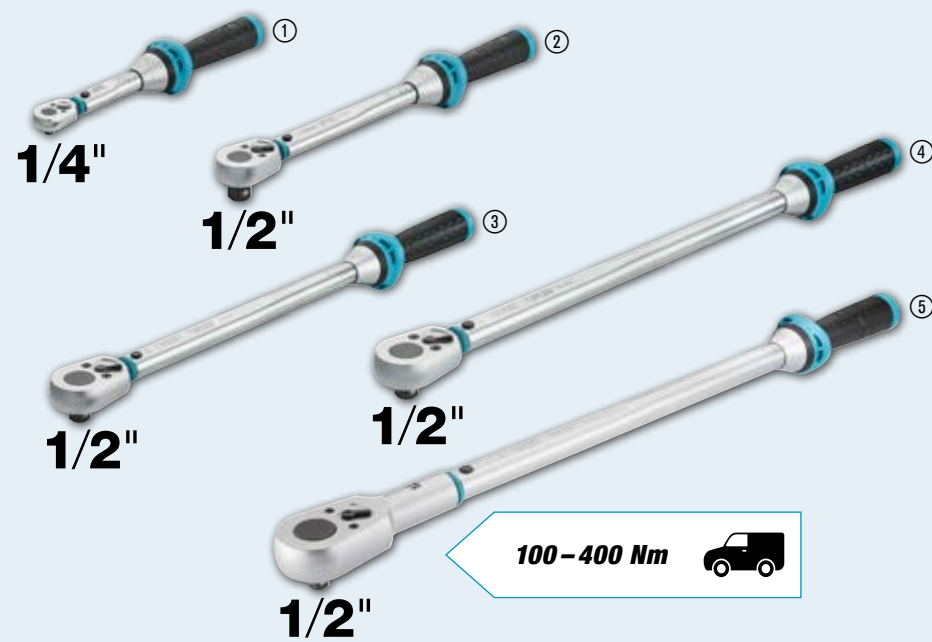


Top seller for commercial vehicles!

Made in Germany

5000-3CT $\frac{1}{4}$ " or $\frac{1}{2}$ " torque wrench 2.5–400 Nm

- Release accuracy tolerance (in direction of operation): $\pm 3\%$ of scale value
- With serial number and certificate



Made in Germany



No.	HAZET No.		Torque range Nm	Length mm	Graduation Nm	EAN-No. 4000896 +
①	5108-3CT	$\frac{1}{4}$ "	2.5–25	234	0.25	218882
②	5120-3CT	$\frac{1}{2}$ "	10–60	320	0.50	218905
③	5122-3CT	$\frac{1}{2}$ "	40–200	519	1.00	219001
④	5123-3CT	$\frac{1}{2}$ "	60–320	628	2.00	218998
⑤	5143-3CT	$\frac{1}{2}$ "	100–400	790	2.50	235407

6000-1CT $\frac{3}{4}$ " or 1" torque wrench 400–1,600 Nm

- Release accuracy tolerance (in direction of operation): $\pm 3\%$ of scale value
- With serial number and certificate
- Incl. bag for safe storage

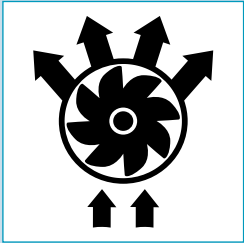


Made in Germany

No.	HAZET No.		Torque range Nm	Length mm	Graduation Nm		EAN-No. 4000896 +
①	6150-1CT	$\frac{3}{4}$ "	400–1,000	1,788	5	24.2–61.0	141067
②	6160-1CT	1"	600–1,600	2,455	5	26.1–70.1	155316

Twin Turbo – The strongest HAZET impact wrench series ever!

- » 1/2", 3/4", 1" Twin Turbo impact wrenches to 4,100 Nm Power
- » Twin Effect – More power in less time!
- » Two air inlets and four air outlets
- » 8-blade air motor with 25% higher impact performance ensures maximum torque
- » Own HAZET Service Centre for best aftersales service



Twin Turbo (TT)

9012ATT, EAN-No. 4000896234738

125 1/2"

1/2" rotatable impact wrench

- Loosening torque (max.): 550 Nm*
- Operation of brake calliper screw connections and other screw-joints that are difficult to reach in the area of steering, shock absorbers, gearboxes
- Handle/trigger adjustable around its own axis for optimal handling allows operation in any position
- Innovative swivel mechanism for extended application range guarantees best accessibility
- Reduced vibrations
- One-hand operation for left- and right-handed users
- Rotation speed: 8,000 rpm
- Weight (net): 1.3 kg
- Air requirement: 113 l/min (1.9 l/sec)
- Coupler plug (incl.): 7.2 nominal size



Short, compact, angled design – only 70 mm!



*Determined with screw size M16

Twin Turbo (TT)

9012TT, EAN-No. 4000896226924

125 1/2"

1/2" impact wrench

- Loosening torque (max.): 2,200 Nm*
- Exhaust air is guided downwards through the handle Low vibration
- Forward/reverse: two-stage (forward), single-stage (reverse)
- Rotation speed: 8,300 rpm
- Weight (net): 1.6 kg
- Air requirement: 147.2 l/min
- Sound power level (at working pressure): 99.7 dB(A) Lp A
- Coupler plug (incl.): 7.2 nominal size



*Determined with screw size M32

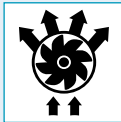


Twin Turbo (TT)

3/4" or 1" impact wrench

20 3/4" 25 1"

- Loosening torque (max.): 4,100 Nm*
- Exhaust air is guided downwards through the handle Low vibration
- Forward/reverse: two-stage (forward), single-stage (reverse)
- Rotation speed: 5,200 rpm
- Coupler plug (incl.): 7.2 nominal size
- Removable handle, 360° adjustable



HAZET No.		Air requirement l/min	dB(A)	kg	EAN-No. 4000896+
9013TT	20 3/4"	243.5 (4.1 l/sec)	99.5	4.5	227143
9014TT	25 1"	235.0 (3.9 l/sec)	101.9	4.6	234684

*Determined with screw size M32

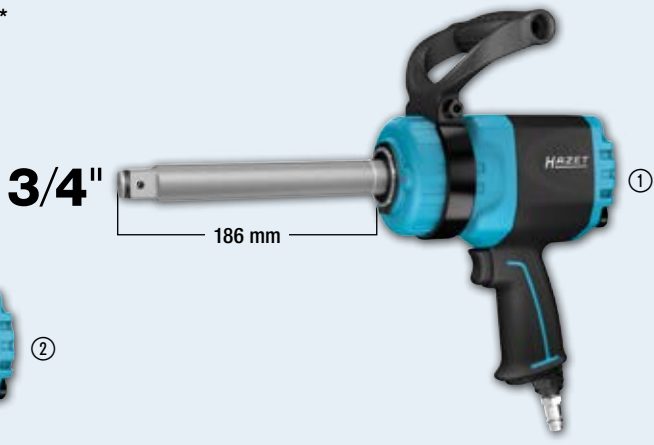


Twin Turbo (LGTT)

3/4" or 1" Twin Turbo impact wrench with long spindle

20 3/4" 25 1"

- Loosening torque (max.): 3,800 Nm (9013LGTT) - 3,850 Nm (9014LGTT)*
- Long spindle for reaching deep screw connections
- Exhaust air is guided downwards through the handle
- Long service life and high efficiency in industrial and automotive applications
- One-hand operation for left- and right-handed users
- Removable handle, 360° adjustable
- Reduced vibrations



9022SR-1, EAN-No. 4000896170593

125 1/2"

1/2" impact ratchet

- Suitable for manual retightening with torque values → 270 Nm (competitive product with approx. 250 Nm only)
- Maximum occupational safety thanks to reaction-free striking mechanism
- Low-impact
- Tightening torque (max.): 102 Nm
- Working pressure: 6.3 bar
- Length (total): 280 mm
- Weight (net): 1.28 kg
- Coupler plug (included): 7.2 nominal size



1/2"

No.	HAZET No.		Spindle length mm	Max. Nm	rpm	g		EAN-No. 4000896+
①	9013LGTT	20 3/4"	186	3,800*	5,200	5.5	16.41 (3/8")	232277
②	9014LGTT	25 1"	240	3,850*	4,600	5.9	20.67 (1/2")	234677

*Determined with screw size M32

9035-5, EAN-No. 4000896132355

Needle scaler

- Adjustable needle cover
- Removes precise, small and large emerging patches of rust
- 19 needles (Ø 3 mm)
- 3,200 impacts/min
- Air requirement: 170 l/min (2.8 l/sec)
- Length (total): 330 mm
- Weight (net): 2.6 kg
- Coupler plug (incl.): 7.2 nominal size



Adjustable needle cover!



9032P-1, EAN-No. 4000896190508

Die grinder · straight design

- Grinding, polishing, burnishing and deburring
- Straight design, high operating comfort
- Length: 200 mm
- Hose diameter (recommended): 10 mm
- Power: 700 W
- Working pressure: 6.3 bar
- Rotation speed: 22,000 rpm
- Weight (net): 800 g
- Coupler plug (incl.): 7.2 nominal size



Extremely powerful device!



9032M-36, EAN-No. 4000896209606

Mini die grinder

- Slim design for precise work with 3 mm and 6 mm grinding pads even in areas with restricted access
- Quiet operation: integrated exhaust hose removes exhaust air from the workpiece and dampens the sound
- Tool length: 150 mm
- Tool diameter: 22.2 mm
- Hose length: 1,500 mm
- Power: 224 W
- Working pressure: 6.3 bar
- Rotation speed: 30,000 rpm
- Weight (net): 380 g
- Air inlet: inside thread 12.91 mm (1/4")
- Coupler plug (incl.): 7.2 nominal size



NEW!



9032MK, EAN-No. 4000896248346

Micro die grinder

- Precise processing of workpieces even in areas with very restricted access
- Long service life thanks to Kevlar blades!
- Hose length: 1,500 mm
- Power: 190 W
- Sound power level (at working pressure): 86.4 dB(A) Lp W
- Sound pressure level (at working pressure): 80.4 dB(A) Lp A
- Rotation speed: 60,000 rpm
- Weight (net): 230 g
- Air inlet: inside thread 12.91 mm (1/4")
- Coupler plug (incl.): 7.2 nominal size



NEW!



9032M-53, EAN-No. 4000896246205

Micro die grinder, angled

- Long service life thanks to high-quality Kevlar blades
- Precise processing of workpieces even in areas with very restricted access
- Tool length: 140 mm
- Tool diameter: 15.5 mm
- Power: 186.4 W
- Working pressure: 6.3 bar
- Rotation speed: 70,000 rpm
- Weight (net): 230 g
- Air inlet: inside thread 12.91 mm (1/4")
- Coupler plug (incl.): 7.2 nominal size
- Connection hose (incl.): 1,500 mm



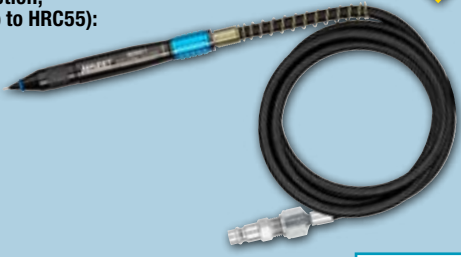
NEW!



9035G-1, EAN-No. 4000896246625

Engraving pen

- Precise and lasting marking (theft protection, installation date, etc.) on workpieces (up to HRC55): metals, stone, ceramics, plastics
- Tool length: 150 mm
- Tool diameter: 22.4 mm
- Working pressure: 6.3 bar
- Rotation speed: 13,000 rpm
- Weight (net): 220 g
- Air inlet: inside thread 12.91 mm (1/4")
- Coupler plug (incl.): 7.2 nominal size
- Connection hose (incl.): 1,500 mm



NEW!



9033N-4, EAN-No. 4000896210183

Belt sander

- Continuous speed regulation via speed regulator on back of handle
- For narrow surfaces (belt width 10 mm)
- Including three abrasive belts 330 x 10 mm (grain size 80, 100, 120)
- Locking device for quick belt changing
- Automatic belt adjustment
- Including hex-head wrench for fine adjustment of the belt and angle setting in the handle
- Coupler plug (incl.): 7.2 nominal size
- Cold insulated handle
- Length (total): 291.4 mm
- Weight (net): 0.81 kg



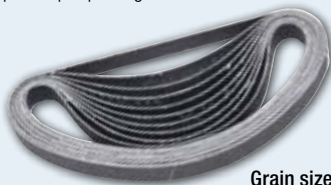
360° rotatable belt run



9033-480/10 · 9033-4100/10 · 9033-4120/10

Abrasive belt set

- Abrasive belts 330 x 10 mm
- 10 pieces per package



Grain size 120

HAZET No.	Grain size	EAN-No. 4000896+	
9033-480/10	80	139101	
9033-4100/10	100	139118	
9033-4120/10	120	139125	



9040Lg-3/2, EAN-No. 4000896206339

Air blow gun

- With 90° lateral nozzle **1** and Venturi nozzle **2**
- For cleaning areas with restricted access on vehicles, machinery and agricultural machinery
- Especially suitable for cleaning cooling fins
- Grip area with insulated lance to protect it from cold
- Increased efficiency due to Venturi nozzle (54 mm)
- 90° lateral nozzle (32 mm) enables cleaning of cooling fins
- Pressure (max.): 12 bar
- Ergonomic handle
- Coupler plug (incl.): 7.2 nominal size
- Hose diameter (recommended): 10 mm
- Working pressure: 6.3 bar
- **Length (total): 1,085 mm**
- Air requirement: 450 l/min (7.5 l/sec)
- Weight (net): 0.31 kg

Extra long!

1 L = 32 mm

2 L = 54 mm



9040P-1, EAN-No. 4000896209545

Air blow gun 100 mm

- For fast removal of shavings or other foreign objects, especially in areas that are difficult to access
- Standard nozzle with bent pipe (Ø 8 mm)
- Coupler plug (incl.): 7.2 nominal size



9040-4, EAN-No. 4000896176236

2-way air blow gun

- Choice of air supply at tool head or handle
- Pressure regulator
- Exchangeable nozzles (steel)
- Short nozzle for areas with restricted access
- Aluminium housing
- Coupler plug (incl.): 7.2 nominal size



Including 112 mm long nozzle!



9042P-4, EAN-No. 4000896209613

Car body gun for underbody protection and cavity sealing

- Suitable for aqueous and oily liquids
- Application field: -10 °C to +80 °C
- Working pressure (max.): 16 bar
- Air requirement with cavity tube: 180 l/min at 8 bar
- Nozzles made of steel/plastic
- Coupler plug (incl.): 7.2 nominal size



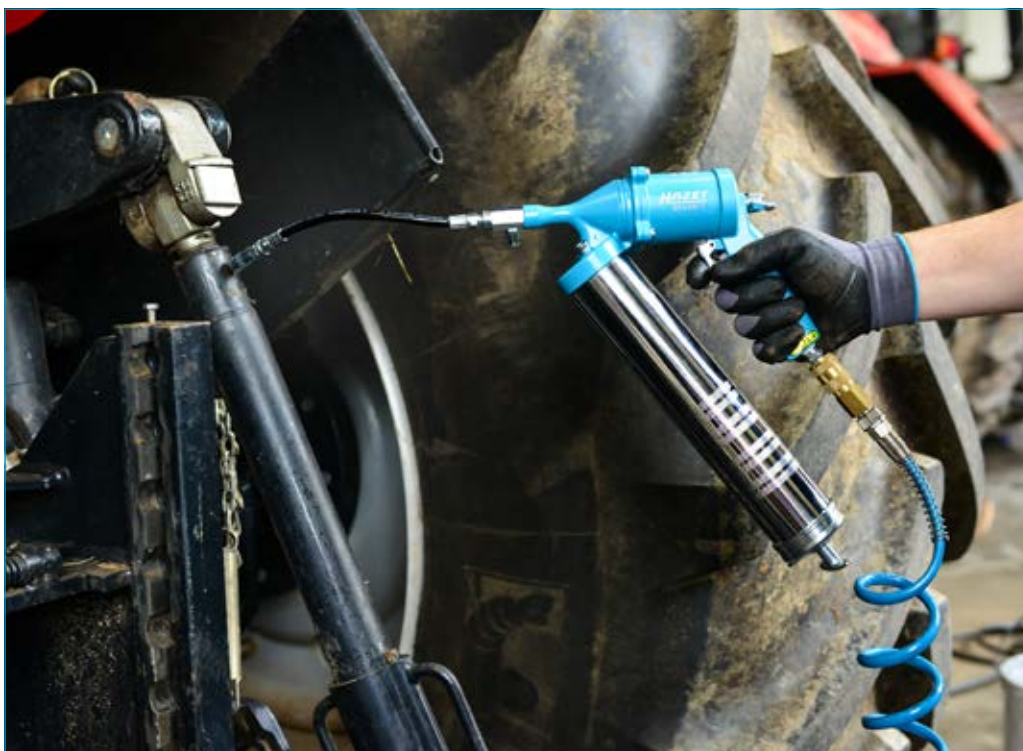
Including metal intake pipe, nozzle and cavity tube!



9042N-1, EAN-No. 4000896176472

Grease gun, pneumatic

- Continuous pumping of grease
- Gun-filling with grease cartridges, loose grease or via dispenser
- **360° adjustable handle**
- Filling capacity (approx.): 400 ml
- Air requirement: 230 l/min
- Nylon tube: 230 mm
- Metal tube: 172 mm
- Weight (net): 2.0 kg
- Coupler plug (incl.): 7.2 nominal size



9041-1, EAN-No. 4000896147076

Tyre inflator • standard

- Handle with operating lever and discharge knob (for one-hand use)
- Hose with plug-in nipple
- Manometer measuring range: 0–12 bar (graduation: 0.1 bar)
- Flexible tube, length: 400 mm
- Air inlet: inside thread 12.91 mm (1/4")



9041G-1, EAN-No. 4000896212385

Tyre inflator • calibrated

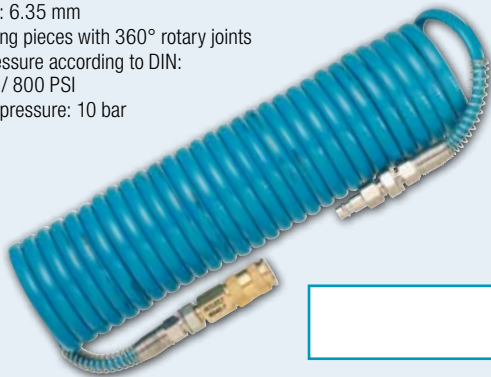
- Precise filling of tyres and checking the air pressure
- Calibrated device with optimally readable, large manometer
- Manometer measuring range: 0–12 bar (graduation: 0.1 bar)
- Flexible tube, length: 1,000 mm
- Air inlet: inside thread 12.91 mm (1/4")



9040-7, EAN-No. 4000896153404

Spiral hose 7.62 m

- Polyurethane
- Inside Ø: 6.35 mm
- Connecting pieces with 360° rotary joints
- Burst pressure according to DIN: 55.1 bar / 800 PSI
- Working pressure: 10 bar



9040N-10 • 9040N-13

Hose reel

- Hose stop function possible at any point with "Stop at any point"
- Automatic guidance winds the hose neatly
- Braked winding to prevent risk of accidents
- Suitable for compressed air or water
- Black hybrid polymer hose
- Working pressure (max.): 20 bar



HAZET No.	Hose inside Ø mm	Outside thread	°C	kg	EAN-No. 4000896 +	
9040N-10	10	16.41 mm 3/8"	-40–60	6.45	206445	
9040N-13	13	20.96 mm 1/2"	-40–80	9.50	214648	



197-3, EAN-No. 4000896158584

Magnetic cup

- Holds small parts such as screws etc.
- Magnetic foot allows fixation to tool trolleys, workshop panels, car lifts etc.
- Diameter: 150 mm



197-4, EAN-No. 4000896214235

Commercial vehicle axle oil collecting pan 3 l

- Safe collection of the oil dripping from the axle when disassembling or repairing the floating axles on trucks and agricultural machinery
- Chemical-resistant, unbreakable plastic with smooth, abrasion-proof surface
- Dimensions (L x W x H): 310 x 240 x 160 mm



9040D-2.5, EAN-No. 4000896214631

Cable reel

- Line stop function possible at any point with "Stop at any point"
- Braked winding to prevent risk of accidents
- Only suitable for indoor use
- Temperature range: -20 to +45 °C
- Resilient when wound up: 1,600 W
- Resilient when unwound: 3,200 W
- Weight (net): 9.2 kg



Including line circuit breaker

4812-23/5AF, EAN-No. 4000896249824

HD touch screen, borescope set with swivelling probe 180°, Ø 3.9 mm

- **Touch screen colour display with Li-Ion battery and magnetic holder**
- 127 mm (5 inch) touch display, readable in sunlight
- Display resolution: 800 x 480 px
- 10-level brightness setting (5 + 5 boost)
- Zoom: 3-step
- Image format (jpg): 1,920 x 1,080 px
- Video format (MP4): 1,920 x 1,080 px
- Negative display of the camera image
- Charging time: 3.5 hrs
- Operating time when fully charged: 4 hours
- IP protection rating (basic unit): IP54
- Compatible with HAZET HD probes 4812-23AF and 4812-11FS
- Weight: 705 g
- Dimensions 4812-23G (H x B x T): 62 x 128 x 46 mm
- Dimensions 4812-23AF (H x B x T): 2,589 x 35 x 51 mm

Contents:

- Basic unit 4812-23G
- HD probe 4812-23AF
- SD card 64 GB incl. adapter
- Micro HDMI cable (D)
- USB-C cable
- HAZET L-Boxx 136

NEW!

5

Technical Specifications



4812-11/5FS, EAN-No. 4000896249572

HD borescope set with front and side camera, Ø 4.9 mm

- **Light boost and integrated reflection reduction**
- Image format (jpg): 1,920 x 1,080 px
- Video format (MP4): 1,920 x 1,080 px
- Negative display of the camera image
- IP protection rating (basic unit): IP54
- USB interface can be used as a power source when no batteries are inserted
- Compatible with HAZET HD probes 4812-11FS and 4812-23AF
- Power source: 4 x AA battery
- Weight: 407 g
- Dimensions 4812-11G (H x W x D): 276 x 123 x 54 mm
- Dimensions 4812-11FS (L x W): 1,121 x 18 mm

Contents:

- Basic unit 4812-11G
- HD probe 4812-11FS
- SD card with 32 GB storage capacity
- Micro HDMI cable (A to D) 1.8 m
- USB-C cable (A to C) 1 m
- Plastic case

NEW!

5

Technical Specifications



4812-23AF, EAN-No. 4000896249602

HD swivelling probe 180° Ø 3.9 mm, front camera

- **Compatible with basic unit 4812-23G and 4812-11G**
- Incl. control unit to operate articulation, video recording, brightness control
- High mobility due to bilateral articulation
- Full double-sided swivel up to a maximum of 180° possible
- Bending radius only approx. 35 mm (-30% compared to conventional designs)
- Resolution: HD 1,280(H) x 720(V) px
- Viewing angle (FOV): 90°
- Depth of focus (DOV): 10–100 mm
- Operating temperature: -10 °C to 60 °C
- Probe protection rating: IP67

NEW!

Technical Specifications



4812-11FS, EAN-No. 4000896249565

HD probe Ø 4.9 mm, front and side camera

- **Compatible with basic unit 4812-11G and 4812-23G**
- Semi-flexible probe enables guidance through cavities
- Front and side camera switchable (0° and 90°)
- Resolution: HD 1,280(H) x 720(V) px
- Viewing angle (FOV): 90°
- Depth of focus (DOV): 10–100 mm
- Operating temperature: -10 °C to 60 °C
- Probe protection rating: IP67

NEW!

Technical Specifications



1992-1, EAN-No. 4000896244270

Thermal camera

- **Building diagnostics, electrical installation, sanitary, air-conditioning and heating technology as well as inspection of engine compartment, brake system, cooling and heating system**
- Automatic hot, cold and central point measurement
- Screen size: 2.4" LCD screen
- Screen resolution: 320 x 240 px
- Image sensor: Vanadium oxide uncooled focal plane arrays (FPA)
- Thermal (or IR) resolution: 160 x 120 px
- Thermal sensitivity (Noise Equivalent Temperature Difference, NETD): < 40 mK (0.04 °C)
- Temperature measuring range: -20 to 550 °C (-4 °F to 1,022 °F)
- Measuring accuracy (max.): ±2 °C, ±2 %
- Protection rating: 54 IP
- Battery life: up to 8 hours (Li-ion rechargeable battery)
- Dimensions (H x W x D): 196 x 117 x 59 mm
- Weight: 0.35 kg

Laser pointer for targeting!



Exchangeable SD card



Power supply: USB cable (Micro USB)



1992-2, EAN-No. 4000896249435

Thermal camera

- **Building diagnostics, electrical installation, sanitary, air-conditioning and heating technology as well as inspection of engine compartment, brake system, cooling and heating system**
- Automatic hot, cold and central point measurement
- Screen size: 3.5" LCD touchscreen
- Screen resolution: 640 x 480 px
- Image sensor: Vanadium oxide uncooled focal plane arrays (FPA)
- Thermal (or IR) resolution: 256 x 192 px
- Thermal sensitivity (Noise Equivalent Temperature Difference, NETD): < 40 mK (0.04 °C)
- Temperature measuring range: -20 to 400 °C (-4 °F to 752 °F)
- Measuring accuracy (max.): ±2 °C, ±2 %
- Protection rating: 54 IP
- Battery life: up to 4 hours (Li-ion rechargeable battery)
- Dimensions (H x W x D): 138.5 x 85.2 x 23.6 mm
- Weight: 0.22 kg

NEW!

Visual camera: 3,264 x 2,448 px (8 MP)

Digital zoom 4x

Video recording





1979FC-60, EAN-No. 4000896227822

LED work spotlight 60 W

- Ideal work/building spotlight for illuminating dark building spaces
- Uniform room lighting: Energy-efficient SMD LED technology
- Rotatable dimmer switch for infinite adjustment
- Robust PU housing with surrounding aluminium components for better heat dissipation
- Visual power indication: 4-stage
- Base: 90° adjustable
- Increased functionality by 2 additional 230 V sockets on the rear which enables coupling and operation of any additional devices
- Luminous flux: 610–6,100 lumens
- Cable length: 5 m (H07RN) 3 x 1.5 mm²
- Protection rating: IP54



1979F-01, EAN-No. 4000896227815

Light diffuser

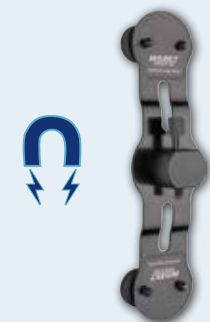
- Attachment for better and homogeneous room illumination and for 360° light diffusion
- Attachment can be locked using a bayonet fitting



1979F-02, EAN-No. 4000896227808

Magnetic holder

- Additional magnetic coating protects against damage to the substrates
- Locking mechanism using the enclosed fastening screw
- Magnetic retention force (max.): 10 kg



1979W-11/3, EAN-No. 4000896235247

LED pen light set, wireless charging

- **Main light COB:** 1979W-11
Luminous flux: 20–200 lm
Operating time (10–100%): 2.5–20 hrs
- **Top light SMD:** 1979W-11
Luminous flux: 120 lm
Operating time (100%): 4 hrs

Contents:

- 2 x 1979W-11 pen light
- 1979WP-2 Charging pad for 2 lights
- Incl. 100 cm USB-C cable and 2 A/5V mains plugs



Incl. charging cable + plug adapter for the charging pad



Top light 1979W-11



1979NW/3, EAN-No. 4000896235261

LED inspection lamp set, wireless charging

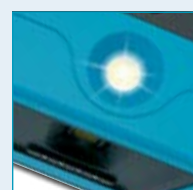
- **Main light COB:** 1979W-11 1979W-82
Luminous flux: 20–200 lm 30–300 lm
Operating time (10–100%): 2.5–20 hrs 2–10 hrs
- **Top light SMD:** 1979W-11 1979W-82
Luminous flux: 120 lm 100 lm
Operating time (100%): 4 hrs 5 hrs

Contents:

- 1979W-11 Pen light
- 1979W-82 Pocket light
- 1979WP-2 Charging pad for 2 lights
- Incl. 100 cm USB-C cable and 2 A/5V mains plugs



Incl. charging cable + plug adapter for the charging pad



Top light 1979W-82



Top light 1979W-11



1979F-03, EAN-No. 4000896227174

Telescopic tripod

- Tripod permits a secure stand on different surfaces
- Foot locking and height locking option
- Incl. additional cable guides on tripod
- Height (max.): 185 cm
- Height (min.): 120 cm
- Load-carrying capacity: 30 kg



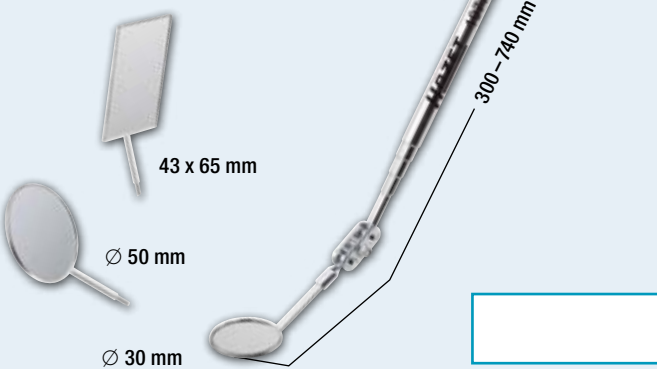
Delivery without work spotlight

1977-2/4, EAN-No. 4000896150144

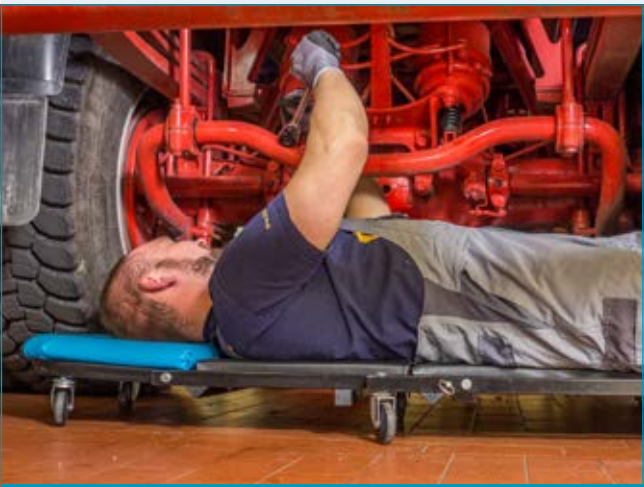
Telescopic inspection mirror set

- Double hinge with tension spring

3 mirrors in one set!



4



195-3, EAN-No. 4000896148691

Creeper/seat

- For convenient working on and underneath a vehicle
- Lying position (H x W x L): 130 x 450 x 1198 mm
- Seat height: 420 mm, seat base: 300 x 310 mm
- Highly resilient (up to): 150 kg
- Combines creeper and seat
- Quick and easy conversion from creeper to seat and vice versa
- Cushioned lying area, lead part coloured HAZET blue
- Sturdy steel tube frame



2151, EAN-No. 4000896013043

Stethoscope

- For the localisation of damaged parts e.g. axles, bearings and gearboxes
- Diaphragm with efficient transmission rate
- Steel tip: 180 mm
- Length (total): 1,080 mm
- Weight (net): 0.13 kg



Made in Germany



195-4, EAN-No. 4000896148707

Pneumatic chair

- Provides a comfortable seat at the work area
- Loading capacity (up to): 125 kg
- Tilt-resistant
- 360° rotation
- Cushioned seat base, Ø 320 mm
- 2 tool compartments
- 5 castors, Ø 60 mm



Adjustable in height from 380 to 510 mm!

2151-02/2, EAN-No. 4000896062287

Ear tips

- For HAZET stethoscope 2151



Made in Germany

2157-3, EAN-No. 4000896231089

Jack-knife with blade lock

- Versatile use in the workshop
- The blade lock protects against injury when in the opened position, the knife is prevented from snapping shut unexpectedly
- Ergonomic aluminium grip thanks to moulded handle
- High-quality stainless steel blade
- Lightweight design suited for handling
- With a practical belt clip
- Length (folded): 115 mm



2150-1, EAN-No. 4000896144129

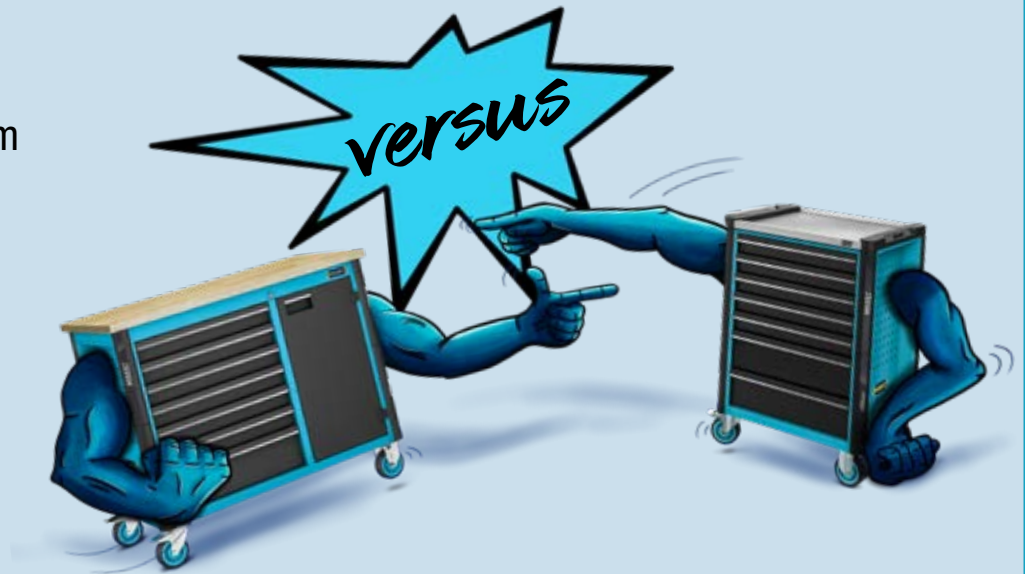
Marking tool

- For marking metal and other materials with smooth surfaces
- Special steel for long-lasting use
- With fastening clip
- Length (total): 150 mm



Tool trolleys and work benches *Assistant*[®]

- » Series 179N – Suitable for every application: with a narrow width of 518 mm up to XXL format with a width of 1,133 mm and a depth of 642 mm
- » Extremely robust design thanks to dual-wall structure
- » Secure locking and heavy-duty drawer concept
- » Sealed working surfaces protect trolley interior
- » Developed and produced by HAZET "Made in Germany"



179NX-8/244,
EAN-No. 4000896223039

Tool trolley *Assistant*[®] with assortment



 Made in Germany

Tool trolley *Assistant*[®] 179NX-8
Dimensions (H x W x D) 1,020 x 786 x 518 mm

244


3/3+

All inclusive offer

179NW-8/244,
EAN-No. 4000896223046

Work bench *Assistant*[®] with assortment



 Made in Germany






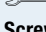
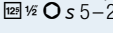



Work bench *Assistant*[®] 179NW-8
Dimensions (H x W x D) 964 x 1,150 x 600 mm

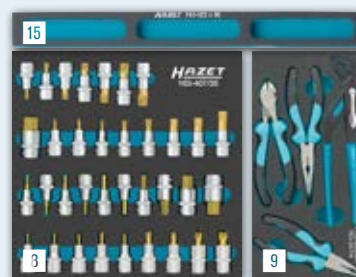
244

3/3+

All inclusive offer

**Incl. assortment with 244 professional tools –
7 drawers filled!**

- Socket/screwdriver set 163-224/57, 57 pieces**
 1/4" s 5.5–13 mm 1/2" s 10–32 mm
- Socket set 163-181/17, 17 pieces**
 1/4" s 10–22 mm
- Combination wrench set 163-210/19, 19 pieces**
 s 8–34 mm
- Tool set 163-211/20, 20 pieces**
 s 8 x 9–34 x 36 mm
 T60, T80, T100 s 14, 17, 19, 22 mm
- Double box-end wrench set 163-296/7, 7 pieces**
 s 6 x 7–21 x 22 mm
- Screwdriver set 163-297/26, 26 pieces**

- Ratcheting combination wrench set 163-385/12, 12 pieces**
 s 8–19 mm
- Screwdriver socket set 163-407/35, 35 pieces**
 1/4" s 5–22 mm • M5–M18 mm • T20–T60
- Pliers set 163-257/4, 4 pieces**
- TORX[®] screwdriver set 163-380/4, 4 pieces**
 T15–T30
- Socket set 163-382/3, 3 pieces**
 s 8, 10, 13 mm
- TORX[®] screwdriver set 163-182/9, 9 pieces**
 T6–T30
- Universal set 163-372/25, 25 pieces**
- Soft foam insert with compartment for small pieces 163-172 x 50**
- Soft foam insert with compartment for small pieces 163-522 x 50 (5 x)**



0-179/244, EAN-No. 4000896204236

**Tool assortment, individual:
244 expert tools**

3/3+



179NX-8/206, EAN-No. 4000896239375

Tool trolley *Assistant*
with 206 expert tools



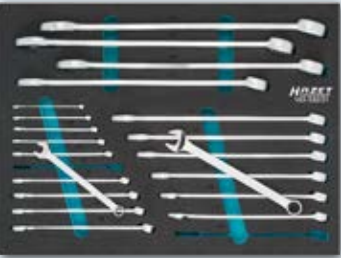
Screwdriver set 163-297/26
● ○ ● ○
Circlip pliers set 163-531/4
● ○



Screwdriver socket set 163-534/37
12 1/2 TMM ○ s 5–22 mm, short
12 1/2 TMM ○ s 5–10 mm, long
12 1/2 TMM ○ s 8–18 mm
12 1/2 TMM ○ T20–T60

3/3+		
------	--	--

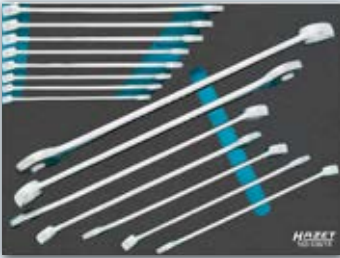
7 drawers filled!



Combination wrench set 163-532/21
s 6–34 mm



Tool set 163-535/18
2–8 mm
2–4 mm



Combination wrench set 163-536/15
1 3/8 s 10–30 mm, long



Tool set 163-533/20
s 8–24 mm
10–60 Nm, 40–200 Nm



Socket set 163-224/57
● ○ ● ○ ● ○ 12 1/2 1 3/8 1 1/2 1 3/4 1 7/8
Pliers set 163-511/4
HiPer



Impact adapter 1007S-7/4
With replaceable 1 1/2 adapter



178N-7/147, EAN-No. 4000896205080

Tool trolley *Assistant* with 147 expert tools



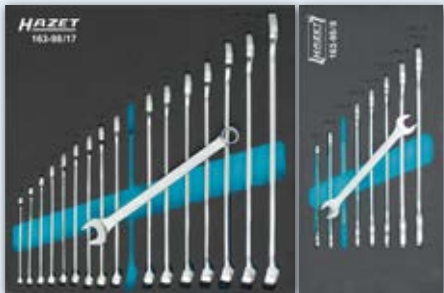
Made in Germany
Tool trolley *Assistant* 178N-7
Dimensions (H x W x D) 1,037 x 781 x 498 mm



Tool set 163-466/106
1 3/8 1 1/2 1 3/4 1 7/8 2
1 3/8 s 4–13 mm 1 1/2 s 10–32 mm
HiPer



Tool set 163-330/16
810-0,5 x 3,0–1,2 x 6,5 mm, 810 PH 1, PH 2
810 T10–T30, 320 mm, 500 g



Combination wrench set 163-98/17
1 3/8 s 6–24 mm
Double open-end wrench set 163-95/8
s 6 x 7–21 x 22 mm

Including HiPer
1/4" and 1/2"
fine-tooth reversible ratchet!

3/3		
-----	--	--



